

Active Recombinant Full Length Human RNASE1 Protein, C-Flag-tagged

Cat. No. RNASE1-02HFL **Lot. No.** (See product label)

SPECIFICATION

Product Overview	Recombinant Full Length Human RNASE1 Protein, fused to Flag-tag at C-terminus, was expressed in Mammalian cells.
Species	Human
Source	Mammalian Cells
Description	This gene encodes a member of the pancreatic-type of secretory ribonucleases, a subset of the ribonuclease A superfamily. The encoded endonuclease cleaves internal phosphodiester RNA bonds on the 3'-side of pyrimidine bases. It prefers poly(C) as a substrate and hydrolyzes 2',3'-cyclic nucleotides, with a pH optimum near 8.0. The encoded protein is monomeric and more commonly acts to degrade ds-RNA over ss-RNA. Alternative splicing occurs at this locus and four transcript variants encoding the same protein have been identified.
Form	25 mM Tris HCl, pH 7.3, 100 mM glycine, 10% glycerol.
Bio-activity	Enzyme activity In vivo treatment Cell treatment Binding assay In vivo treatment
Molecular Mass	14.5 kDa

 Tel: 1-631-559-9269 1-516-512-3133

 Email: info@creative-biomart.com  Fax: 1-631-938-8127

 45-1 Ramsey Road, Shirley, NY 11967, USA

AA Sequence	MALEKSLVRLLLLVLILLVLGWVQPSLGKESRAKKFQRQHMDSDSSPSSSSTYCNQ MMRRRNMTQGRCKP VNTFVHEPLVDVQNVCFQEKVTCKNGQGNCYKSNSSMHIT DCRLTNGSRYPNCAYRTSPKERHIIVACEG SPYVPVHFDASVEDSTTRTRPLEQKLISEEDLAANDILDYKDDDDKV
Purity	> 80% as determined by SDS-PAGE and Coomassie blue staining.
Stability	Stable for 12 months from the date of receipt of the product under proper storage and handling conditions. Avoid repeated freeze-thaw cycles.
Storage	Store at -80 centigrade.
Concentration	>50 ug/mL as determined by microplate BCA method.
Preparation	Recombinant protein was captured through anti-DDK affinity column followed by conventional chromatography steps.
Protein Families	Secreted Protein, Transmembrane
Full Length	Full L.
GENE INFORMATION	
Gene Name	RNASE1 ribonuclease A family member 1, pancreatic [Homo sapiens (human)]
Official Symbol	RNASE1
Synonyms	RAC1; RIB1; RNS1
Gene ID	6035

 Tel: 1-631-559-9269 1-516-512-3133

 Email: info@creative-biomart.com  Fax: 1-631-938-8127

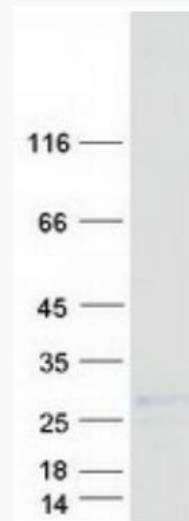
 45-1 Ramsey Road, Shirley, NY 11967, USA

mRNA Refseq [NM_198235.3](#)

Protein Refseq [NP_937878.1](#)

MIM [180440](#)

UniProt ID [P07998](#)



Coomassie blue staining of purified RNASE1 protein.

 Tel: 1-631-559-9269 1-516-512-3133

 Email: info@creative-biomart.com  Fax: 1-631-938-8127

 45-1 Ramsey Road, Shirley, NY 11967, USA