

## Active Recombinant Human RNASE1 Protein, His-tagged

Cat. No. RNASE1-12H Lot. No. (See product label)

### SPECIFICATION

<b>Product Overview</b>	Recombinant human RNASE1 (29-156aa), fused to His-tag at C-terminus, was expressed in HEK293 cell and purified by using conventional chromatography techniques.
<b>Species</b>	Human
<b>Source</b>	HEK293
<b>ProteinLength</b>	29-156 a.a.
<b>Description</b>	This gene encodes a member of the pancreatic-type of secretory ribonucleases, a subset of the ribonuclease A superfamily. The encoded endonuclease cleaves internal phosphodiester RNA bonds on the 3'-side of pyrimidine bases. It prefers poly(C) as a substrate and hydrolyzes 2',3'-cyclic nucleotides, with a pH optimum near 8.0. The encoded protein is monomeric and more commonly acts to degrade ds-RNA over ss-RNA. Alternative splicing occurs at this locus and four transcript variants encoding the same protein have been identified.
<b>Form</b>	Liquid
<b>Bio-activity</b>	Specific activity is $> 3 \times 10^6$ unit/mg, and is defined as the amount of enzyme that hydrolyze 1.0 nmole of RNA per minute at 25 centigrade.
<b>Molecular Mass</b>	15.3 kDa

 Tel: 1-631-559-9269 1-516-512-3133

 Email: [info@creative-biomart.com](mailto:info@creative-biomart.com)  Fax: 1-631-938-8127

 45-1 Ramsey Road, Shirley, NY 11967, USA

<b>Identity</b>	134aa
<b>AA Sequence</b>	KESRAKKFQRQHMDSOSSPSSSSTYCNQMMRRRNMTQGRCKPVNTFVHEPLVDV QNVCFQEKVTCCKNGQGNCYKSNSSMHITDCRLTNGSRYPNCAYRTSPKERHIIIVAC EGSPYVPVHFDASVEDST
<b>N-terminal Sequence Analysis</b>	Lys-Glu-Ser-Arg-Ala
<b>Endotoxin</b>	< 1 EU/μg of protein (determined by LAL method)
<b>Purity</b>	90% by SDS-PAGE
<b>Applications</b>	SDS-PAGE, Enzyme Activity
<b>Storage</b>	Can be stored at 2 to 8 centigrade for 1 week. For long term storage, aliquot and store at -20 to -80 centigrade. Avoid repeated freezing and thawing cycles.
<b>Concentration</b>	1 mg/mL (determined by Absorbance at 280nm)
<b>Storage Buffer</b>	In Phosphate-Buffered Saline (pH 7.4) containing 10% glycerol

## GENE INFORMATION

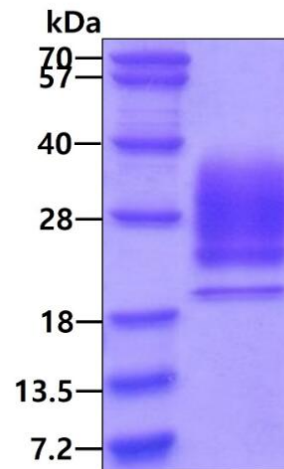
<b>Gene Name</b>	<a href="#">RNASE1 ribonuclease A family member 1, pancreatic [ Homo sapiens (human) ]</a>
<b>Official Symbol</b>	<a href="#">RNASE1</a>
<b>Synonyms</b>	RNASE1; ribonuclease A family member 1, pancreatic; RAC1; RIB1; RNS1; ribonuclease pancreatic; HP-RNase; RIB-1; RNase 1; RNase A; RNase upl-1; ribonuclease 1; ribonuclease A C1; ribonuclease, RNase A family, 1 (pancreatic); EC

 Tel: 1-631-559-9269 1-516-512-3133

 Email: [info@creative-biomart.com](mailto:info@creative-biomart.com)  Fax: 1-631-938-8127

 45-1 Ramsey Road, Shirley, NY 11967, USA

4.6.1.18

**Gene ID** 6035**mRNA Refseq** NM\_198235**Protein Refseq** NP\_937878**MIM** 180440**UniProt ID** P07998**SDS-PAGE**

3 µg by SDS-PAGE under reducing condition and visualized by coomassie blue stain.

 Tel: 1-631-559-9269 1-516-512-3133

 Email: [info@creative-biomart.com](mailto:info@creative-biomart.com)  Fax: 1-631-938-8127

 45-1 Ramsey Road, Shirley, NY 11967, USA