

Recombinant Human RNASE1 Protein, Myc/DDK-tagged, C13 and N15-labeled

Cat. No. RNASE1-3424H **Lot. No.** (See product label)

SPECIFICATION

Product Overview	RNASE1 MS Standard C13 and N15-labeled recombinant protein (NP_937878) with a C-terminal MYC/DDK tag, was expressed in HEK293 cells.
Species	Human
Source	HEK293
Description	This gene encodes a member of the pancreatic-type of secretory ribonucleases, a subset of the ribonuclease A superfamily. The encoded endonuclease cleaves internal phosphodiester RNA bonds on the 3'-side of pyrimidine bases. It prefers poly(C) as a substrate and hydrolyzes 2',3'-cyclic nucleotides, with a pH optimum near 8.0. The encoded protein is monomeric and more commonly acts to degrade ds-RNA over ss-RNA. Alternative splicing occurs at this locus and four transcript variants encoding the same protein have been identified.
Molecular Mass	17.6 kDa
AA Sequence	MALEKSLVRLLLLVLILLVLGWVQPSLGKESRAKKFQRQHMDSOSSPSSSSTYCNQ MMRRRNMTQGRCKPVNTFVHEPLVDVQNVCFQEKVTCCKNGQGNCYKSNSMHI DCRLTNGSRYPNCAYRTSPKERHIIVACEGSPYVPVHFDASVEDSTTRTRPLEQKLI SEEDLAANDILDYKDDDDKV
Purity	> 80% as determined by SDS-PAGE and Coomassie blue staining

 Tel: 1-631-559-9269 1-516-512-3133

 Email: info@creative-biomart.com  Fax: 1-631-938-8127

 45-1 Ramsey Road, Shirley, NY 11967, USA

Stability	Stable for 3 months from receipt of products under proper storage and handling conditions.
Storage	Store at -80 centigrade. Avoid repeated freeze-thaw cycles.
Concentration	50 µg/mL as determined by BCA
Storage Buffer	100 mM glycine, 25 mM Tris-HCl, pH 7.3.

GENE INFORMATION

Gene Name	RNASE1 ribonuclease A family member 1, pancreatic [Homo sapiens (human)]
Official Symbol	RNASE1
Synonyms	RNASE1; ribonuclease, RNase A family, 1 (pancreatic); RNS1; ribonuclease pancreatic; RIB-1; RNase 1; RNase A; HP-RNase; RNase upl-1; ribonuclease 1; ribonuclease A; RIB1; MGC12408;
Gene ID	6035
mRNA Refseq	NM_198235
Protein Refseq	NP_937878
MIM	180440
UniProt ID	P07998

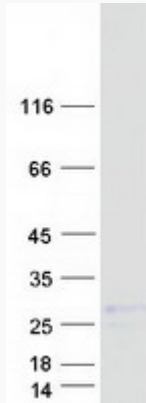
 Tel: 1-631-559-9269 1-516-512-3133

 Email: info@creative-biomart.com  Fax: 1-631-938-8127

 45-1 Ramsey Road, Shirley, NY 11967, USA



SDS-PAGE



 Tel: 1-631-559-9269 1-516-512-3133

 Email: info@creative-biomart.com  Fax: 1-631-938-8127

 45-1 Ramsey Road, Shirley, NY 11967, USA