

Recombinant Human RNASE1 Protein (Lys29-Thr156), C-His tagged

Cat. No. RNASE1-6184H Lot. No. (See product label)

SPECIFICATION

Product Overview	Recombinant human RNASE1 (Lys29-Thr156) fused with the C-His tag was expressed in E. coli.
Species	Human
Source	E.coli
ProteinLength	Lys29-Thr156
Form	Lyophilized powder/frozen liquid
Molecular Mass	16.88 kDa
Purity	> 90 % as determined by SDS-PAGE
Notes	For research use only.
Storage	Use a manual defrost freezer and avoid repeated freeze thaw cycles. Store at 2 to 8 centigrade for one week. Store at -20 to -80 centigrade for twelve months from the date of receipt.
Storage Buffer	0.01M PBS, pH 7.4, 0.02 % NLS
Reconstitution	Reconstitute in sterile water for a stock solution.

 Tel: 1-631-559-9269 1-516-512-3133

 Email: info@creative-biomart.com  Fax: 1-631-938-8127

 45-1 Ramsey Road, Shirley, NY 11967, USA

Shipping They are shipped out with dry ice/blue ice unless customers require otherwise.

GENE INFORMATION

Gene Name RNASE1 ribonuclease, RNase A family, 1 (pancreatic) [Homo sapiens (human)]

Official Symbol RNASE1

Synonyms RNASE1; ribonuclease, RNase A family, 1 (pancreatic); RNS1; ribonuclease pancreatic; RIB-1; RNase 1; RNase A; HP-RNase; RNase upl-1; ribonuclease 1; ribonuclease A; RIB1; MGC12408;

Gene ID 6035

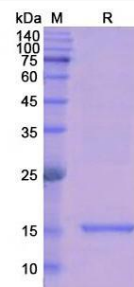
mRNA Refseq NM_002933

Protein Refseq NP_002924

MIM 180440

UniProt ID P07998

SDS-PAGE



 Tel: 1-631-559-9269 1-516-512-3133

 Email: info@creative-biomart.com  Fax: 1-631-938-8127

 45-1 Ramsey Road, Shirley, NY 11967, USA