

Recombinant Human RNASE10 Protein, Myc/DDK-tagged, C13 and N15-labeled

Cat. No. RNASE10-5971H **Lot. No.** (See product label)

SPECIFICATION

Product Overview	RNASE10 MS Standard C13 and N15-labeled recombinant protein (NP_001012993) with a C-terminal MYC/DDK tag, was expressed in HEK293 cells.
Species	Human
Source	HEK293
Description	RNASE10 (Ribonuclease A Family Member 10 (Inactive)) is a Protein Coding gene. Diseases associated with RNASE10 include Hypotrichosis 6 and Orchitis. Gene Ontology (GO) annotations related to this gene include nucleic acid binding and ribonuclease activity. An important paralog of this gene is RNASE4.
Molecular Mass	24 kDa
AA Sequence	MKLNLVQIFFMLLMLLLGLGMGLGLGLHMATAVLEESDQPLNEFWSSDSQDKAEAT EEGDGTQTTETLVLSNKEVVQPGWPEDPILGEDEVGGNKMLRASALFQSNKDYLRL DQTDRECNDMMAHKMKEPSQSCIAQYAFIHEDLNTVKAVCNSPVIACELKGGKCHK SSRPFDLTLCELSQPDQVTPNCNYLTSVIKKHIIITCNDMKRQLPTGQTRTRPLEQKLI SEEDLAANDILDYKDDDDKV
Purity	> 80% as determined by SDS-PAGE and Coomassie blue staining
Stability	Stable for 3 months from receipt of products under proper storage and handling conditions.

 Tel: 1-631-559-9269 1-516-512-3133

 Email: info@creative-biomart.com  Fax: 1-631-938-8127

 45-1 Ramsey Road, Shirley, NY 11967, USA

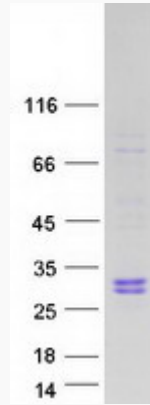
Storage	Store at -80 centigrade. Avoid repeated freeze-thaw cycles.
Concentration	50 µg/mL as determined by BCA
Storage Buffer	100 mM glycine, 25 mM Tris-HCl, pH 7.3.
GENE INFORMATION	
Gene Name	RNASE10 ribonuclease A family member 10 (inactive) [Homo sapiens (human)]
Official Symbol	RNASE10
Synonyms	RNASE10; ribonuclease A family member 10 (inactive); RAH1; RNASE9; inactive ribonuclease-like protein 10; ribonuclease A H1; ribonuclease, RNase A family, 10 (non-active)
Gene ID	338879
mRNA Refseq	NM_001012975
Protein Refseq	NP_001012993
UniProt ID	Q5GAN6

 Tel: 1-631-559-9269 1-516-512-3133

 Email: info@creative-biomart.com  Fax: 1-631-938-8127

 45-1 Ramsey Road, Shirley, NY 11967, USA

SDS-PAGE



 Tel: 1-631-559-9269 1-516-512-3133

 Email: info@creative-biomart.com  Fax: 1-631-938-8127

 45-1 Ramsey Road, Shirley, NY 11967, USA