

Recombinant Human RNASE13 protein, His-tagged

Cat. No. RNASE13-1622H Lot. No. (See product label)

SPECIFICATION

Product Overview	Recombinant Human RNASE13 aa. (Val20~Ile156 (Accession # Q5GAN3)) fused with N-terminal His tag was produced in E. coli cells.
Species	Human
Source	E.coli
ProteinLength	Val20~Ile156
Form	Freeze-dried powder
Molecular Mass	19kDa as determined by SDS-PAGE reducing conditions.
Endotoxin	<1.0EU per 1ug (determined by the LAL method)
Purity	>95%
Applications	SDS-PAGE; WB; ELISA; IP.
Stability	The thermal stability is described by the loss rate. The loss rate was determined by accelerated thermal degradation test, that is, incubate the protein at 37°C for 48h, and no obvious degradation and precipitation were observed. The loss rate is less than 5% within the expiration date under appropriate storage condition.
Storage	Avoid repeated freeze/thaw cycles. Store at 2-8°C for one month. Aliquot and store at

 Tel: 1-631-559-9269 1-516-512-3133

 Email: info@creative-biomart.com  Fax: 1-631-938-8127

 45-1 Ramsey Road, Shirley, NY 11967, USA

-80°C for 12 months.

Storage buffer Supplied as lyophilized form in PBS, pH 7.4, containing 5% sucrose, 0.01% sarcosyl.

Reconstitution Reconstitute in sterile PBS, pH7.2-pH7.4.

Isoelectric Point 8.6

GENE INFORMATION

Gene Name [RNASE13 ribonuclease A family member 13 \(inactive\) \[Homo sapiens \(human\) \]](#)

Official Symbol [RNASE13](#)

Synonyms RNASE13; ribonuclease A family member 13 (inactive); RAL1; HEL-S-86p; probable inactive ribonuclease-like protein 13; epididymis secretory sperm binding protein Li 86p; ribonuclease 13; ribonuclease A L1; ribonuclease, RNase A family, 13 (non-active); ribonuclease-like protein 13

Gene ID [440163](#)

mRNA Refseq [NM_001012264.3](#)

Protein Refseq [NP_001012264.1](#)

UniProt ID [Q5GAN3](#)

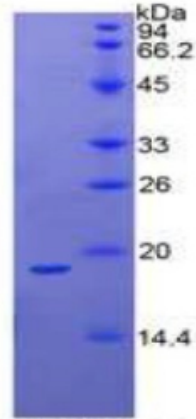
 Tel: 1-631-559-9269 1-516-512-3133

 Email: info@creative-biomart.com  Fax: 1-631-938-8127

 45-1 Ramsey Road, Shirley, NY 11967, USA

SDS-PAGE

Human RNASE13



15% SDS-PAGE

 Tel: 1-631-559-9269 1-516-512-3133

 Email: info@creative-biomart.com  Fax: 1-631-938-8127

 45-1 Ramsey Road, Shirley, NY 11967, USA