

## Recombinant Human RNASE13 Protein (Val20-His116), N-His tagged

Cat. No. RNASE13-5440H    Lot. No. (See product label)

### SPECIFICATION

<b>Product Overview</b>	Recombinant human RNASE13 (Val20-His116) fused with the N-His tag was expressed in E. coli.
<b>Species</b>	Human
<b>Source</b>	E.coli
<b>ProteinLength</b>	Val20-His116
<b>Description</b>	Predicted to enable nucleic acid binding activity. Predicted to be located in extracellular region.
<b>Form</b>	Lyophilized powder/frozen liquid
<b>Molecular Mass</b>	13.67 kDa
<b>Purity</b>	> 90 % as determined by SDS-PAGE
<b>Notes</b>	For research use only.
<b>Storage</b>	Use a manual defrost freezer and avoid repeated freeze thaw cycles. Store at 2 to 8 centigrade for one week. Store at -20 to -80 centigrade for twelve months from the date of receipt.

 Tel: 1-631-559-9269    1-516-512-3133

 Email: [info@creative-biomart.com](mailto:info@creative-biomart.com)     Fax: 1-631-938-8127

 45-1 Ramsey Road, Shirley, NY 11967, USA

<b>Storage Buffer</b>	0.01M PBS, pH 7.4, 0.02 % NLS
<b>Reconstitution</b>	Reconstitute in sterile water for a stock solution.
<b>Shipping</b>	They are shipped out with dry ice/blue ice unless customers require otherwise.

## GENE INFORMATION

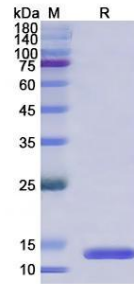
<b>Gene Name</b>	RNASE13 ribonuclease A family member 13 (inactive) [ Homo sapiens (human) ]
<b>Official Symbol</b>	RNASE13
<b>Synonyms</b>	RNASE13; ribonuclease A family member 13 (inactive); RAL1; HEL-S-86p; probable inactive ribonuclease-like protein 13; epididymis secretory sperm binding protein Li 86p; ribonuclease 13; ribonuclease A L1; ribonuclease, RNase A family, 13 (non-active); ribonuclease-like protein 13
<b>Gene ID</b>	440163
<b>mRNA Refseq</b>	NM_001012264
<b>Protein Refseq</b>	NP_001012264
<b>UniProt ID</b>	Q5GAN3

 Tel: 1-631-559-9269 1-516-512-3133

 Email: [info@creative-biomart.com](mailto:info@creative-biomart.com)  Fax: 1-631-938-8127

 45-1 Ramsey Road, Shirley, NY 11967, USA

**SDS-PAGE**



 Tel: 1-631-559-9269 1-516-512-3133

 Email: [info@creative-biomart.com](mailto:info@creative-biomart.com)  Fax: 1-631-938-8127

 45-1 Ramsey Road, Shirley, NY 11967, USA