

Recombinant Human RNASE4 Protein, Myc/DDK-tagged, C13 and N15-labeled

Cat. No. RNASE4-3580H **Lot. No.** (See product label)

SPECIFICATION

Product Overview	RNASE4 MS Standard C13 and N15-labeled recombinant protein (NP_919412) with a C-terminal MYC/DDK tag, was expressed in HEK293 cells.
Species	Human
Source	HEK293
Description	The protein encoded by this gene belongs to the pancreatic ribonuclease family. It plays an important role in mRNA cleavage and has marked specificity towards the 3' side of uridine nucleotides. Alternative splicing results in four transcript variants encoding the same protein. This gene and the gene that encodes angiogenin share promoters and 5' exons. Each gene splices to a unique downstream exon that contains its complete coding region.
Molecular Mass	13.8 kDa
AA Sequence	MALQRTHSLLLLLLLLSLLGLGLVQPSYGQDGM YQRFLRQH VHP EETGGSDRYCNLM MQR RKMTLYHCKRFNTFIHEDIWNIRSICSTTNIQCKNGKMNCHEGVVKVTDCRDTG SSRAPNCRYRAIASTRRVVIACEGNPQVPVHFDGTRTRPLEQKLISEEDLAANDILDY KDDDDKV
Purity	> 80% as determined by SDS-PAGE and Coomassie blue staining
Stability	Stable for 3 months from receipt of products under proper storage and handling

 Tel: 1-631-559-9269 1-516-512-3133

 Email: info@creative-biomart.com  Fax: 1-631-938-8127

 45-1 Ramsey Road, Shirley, NY 11967, USA

conditions.

Storage Store at -80 centigrade. Avoid repeated freeze-thaw cycles.

Concentration 50 µg/mL as determined by BCA

Storage Buffer 100 mM glycine, 25 mM Tris-HCl, pH 7.3.

GENE INFORMATION

Gene Name [RNASE4 ribonuclease A family member 4 \[Homo sapiens \(human\) \]](#)

Official Symbol [RNASE4](#)

Synonyms RNASE4; ribonuclease A family member 4; RAB1; RNS4; ribonuclease 4; RNase 4; epididymis secretory sperm binding protein; ribonuclease A B1; ribonuclease, RNase A family, 4; EC 3.1.27.-

Gene ID [6038](#)

mRNA Refseq [NM_194431](#)

Protein Refseq [NP_919412](#)

MIM [601030](#)

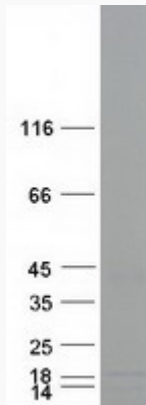
UniProt ID [P34096](#)

 Tel: 1-631-559-9269 1-516-512-3133

 Email: info@creative-biomart.com  Fax: 1-631-938-8127

 45-1 Ramsey Road, Shirley, NY 11967, USA

SDS-PAGE



 Tel: 1-631-559-9269 1-516-512-3133

 Email: info@creative-biomart.com  Fax: 1-631-938-8127

 45-1 Ramsey Road, Shirley, NY 11967, USA