

Recombinant Human RNASEH1 Protein

Cat. No. RNASEH1-164H **Lot. No.** (See product label)

SPECIFICATION

Product Overview	Recombinant Human RNASEH1 was produced in E. coli.
Species	Human
Source	E.coli
ProteinLength	1-260 a.a.
Description	This gene encodes an endonuclease that specifically degrades the RNA of RNA-DNA hybrids and plays a key role in DNA replication and repair. Alternate in-frame start codon initiation results in the production of alternate isoforms that are directed to the mitochondria or to the nucleus. The production of the mitochondrial isoform is modulated by an upstream open reading frame (uORF). Mutations in this gene have been found in individuals with progressive external ophthalmoplegia with mitochondrial DNA deletions, autosomal recessive 2. Alternative splicing results in additional coding and non-coding transcript variants. Pseudogenes of this gene have been defined on chromosomes 2 and 17.
Form	Liquid. In PBS (pH 7.4).
Molecular Mass	(Theoretical molecular weight)~29.2kDa
AA sequence	MFYAVRRGRKTGVFLTWNECRAQVDRFPAARFKKFATEDEAWAFVVRKSASPEVSE GHENQHGESEAKASKRLREPLDGDGHESAEPYAKHMKPSVEPAPPVSRDFTFSYM GDFVVVYTDGCCSSNGRRRPRAGIGVYWGPGHPLNVGIRLPGRQTNQRAEIIHAAC

 Tel: 1-631-559-9269 1-516-512-3133

 Email: info@creative-biomart.com  Fax: 1-631-938-8127

 45-1 Ramsey Road, Shirley, NY 11967, USA

KAIEQAKTQNINKLVLYTDSMFTINGITNWWVQGWKKNGWKTSAGKEVINKEDFVALE
RLTQGMDIQWMHVPGHSGFIGNEEADRLAREGAKQSED

Purity >85% as determined by SDS-PAGE

Storage Short Term Storage at +4 centigrade, Long Term, please prepare aliquots with 20% glycerol and store at -20~-80 centigrade. Avoid freeze/thaw cycles.

Concentration 0.1 mg/ml

GENE INFORMATION

Gene Name [RNASEH1 ribonuclease H1 \[Homo sapiens \]](#)

Official Symbol [RNASEH1](#)

Synonyms RNASEH1; ribonuclease H1; RNase H1; ribonuclease H type II; RNH1; H1RNA;

Gene ID [246243](#)

mRNA Refseq [NM_002936](#)

Protein Refseq [NP_002927](#)

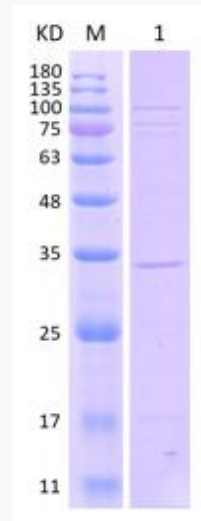
MIM [604123](#)

UniProt ID [O60930](#)

 Tel: 1-631-559-9269 1-516-512-3133

 Email: info@creative-biomart.com  Fax: 1-631-938-8127

 45-1 Ramsey Road, Shirley, NY 11967, USA



 Tel: 1-631-559-9269 1-516-512-3133

 Email: info@creative-biomart.com  Fax: 1-631-938-8127

 45-1 Ramsey Road, Shirley, NY 11967, USA