

Recombinant Human RNASEH1 Protein

Cat. No. RNASEH1-68H **Lot. No.** (See product label)

SPECIFICATION

Product Overview	Recombinant Human RNASEH1 Protein was expressed in E. coli.
Species	Human
Source	E.coli
ProteinLength	17-280 a.a.
Description	This gene encodes an endonuclease that specifically degrades the RNA of RNA-DNA hybrids and plays a key role in DNA replication and repair. Alternate in-frame start codon initiation results in the production of alternate isoforms that are directed to the mitochondria or to the nucleus. The production of the mitochondrial isoform is modulated by an upstream open reading frame (uORF). Mutations in this gene have been found in individuals with progressive external ophthalmoplegia with mitochondrial DNA deletions, autosomal recessive 2. Alternative splicing results in additional coding and non-coding transcript variants. Pseudogenes of this gene have been defined on chromosomes 2 and 17.
Form	Liquid. In 20 mM Tris-HCl, 100 mM KCl, 10 mM MgCl ₂ , 0.1 mM DTT, 0.1 mM EDTA, 50% Glycerol, pH 7.5.
Molecular Mass	~31.4 kDa
AA Sequence	MGSSHHHHHHSSGLVPRGSHMFYAVRRGRKTGVFLTWNECRAQVDRFPAARFKK FATEDEAWAFVRKSASPEVSEGHEHQHGQESEAKASKRLREPLDGGGHESAEPYA

 Tel: 1-631-559-9269 1-516-512-3133

 Email: info@creative-biomart.com  Fax: 1-631-938-8127

 45-1 Ramsey Road, Shirley, NY 11967, USA

KHMKPSVEPAPPVSRDTFSYMGDFVVVYTDGCCSSNGRRRPRAGIGVYWGP GHP
 LNVGIRLPGRQTNQRAEIIHAACKAIEQAKTQNINKLVLYTDSMFTINGITNWWVQG WKK
 NGWKTSAGKEVINKEDFVALERLTQGMDIQWMHVPGHSGFIGNEEADRLAREGAK
 QSED

Purity >85%

Storage Short Term Storage at 4 centigrade, Long Term, please prepare aliquots with 20% glycerol and store at -20 to -80 centigrade. Avoid freeze/thaw cycles.

Concentration 0.04 mg/ml

Official Full Name Ribonuclease H1

GENE INFORMATION

Gene Name [RNASEH1 ribonuclease H1 \[Homo sapiens \(human\) \]](#)

Official Symbol [RNASEH1](#)

Synonyms RNH1; H1RNA; PEOB2

Gene ID [246243](#)

mRNA Refseq [NM_001286834](#)

Protein Refseq [NP_001273763](#)

MIM [604123](#)

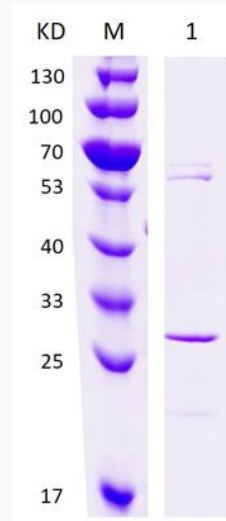
UniProt ID [O60930](#)

 Tel: 1-631-559-9269 1-516-512-3133

 Email: info@creative-biomart.com  Fax: 1-631-938-8127

 45-1 Ramsey Road, Shirley, NY 11967, USA

SDS-PAGE



12% SDS-PAGE analysis profiles of purified Human RNASEH1 (CBB stained).

 Tel: 1-631-559-9269 1-516-512-3133

 Email: info@creative-biomart.com  Fax: 1-631-938-8127

 45-1 Ramsey Road, Shirley, NY 11967, USA