

# Recombinant Human RNASEH2A Protein, Myc/DDK-tagged, C13 and N15-labeled

**Cat. No.** RNASEH2A-4598H    **Lot. No.** (See product label)

## SPECIFICATION

<b>Product Overview</b>	RNASEH2A MS Standard C13 and N15-labeled recombinant protein (NP_006388) with a C-terminal MYC/DDK tag, was expressed in HEK293 cells.
<b>Species</b>	Human
<b>Source</b>	HEK293
<b>Description</b>	The protein encoded by this gene is a component of the heterotrimeric type II ribonuclease H enzyme (RNaseH2). RNaseH2 is the major source of ribonuclease H activity in mammalian cells and endonucleolytically cleaves ribonucleotides. It is predicted to remove Okazaki fragment RNA primers during lagging strand DNA synthesis and to excise single ribonucleotides from DNA-DNA duplexes. Mutations in this gene cause Aicardi-Goutieres Syndrome (AGS), a an autosomal recessive neurological disorder characterized by progressive microcephaly and psychomotor retardation, intracranial calcifications, elevated levels of interferon-alpha and white blood cells in the cerebrospinal fluid.
<b>Molecular Mass</b>	33.4 kDa
<b>AA Sequence</b>	MDLSELERDNTGRCRLSSPVPVAVCRKEPCVLGVDEAGRGPVLGPMVYAICYCPLPR LADLEALKVADSKTLLESERERLFAKMEDTDFVGWALDVLSPNLISTSMLGRVKYNL NSLSHDTATGLIQYALDQGVNVTQVFVDTVGMPETYQARLQQSFPGIEVTVKAKAD ALYPVVSAAASICAKVARDQAVKKWQFVEKLQDLTDYGSGYPNDPKTKAWLKEHVE

 Tel: 1-631-559-9269    1-516-512-3133

 Email: [info@creative-biomart.com](mailto:info@creative-biomart.com)     Fax: 1-631-938-8127

 45-1 Ramsey Road, Shirley, NY 11967, USA

PVFGFPQFVRFWRRTAQITILEKEAEDVIWEDSASENQEGLRKITSYFLNEGSQARPR  
SSHRYFLERGLSATSLRTRTRPLEQKLISEEDLAANDILDYKDDDDKV

**Purity** > 80% as determined by SDS-PAGE and Coomassie blue staining

**Stability** Stable for 3 months from receipt of products under proper storage and handling conditions.

**Storage** Store at -80 centigrade. Avoid repeated freeze-thaw cycles.

**Concentration** 50 µg/mL as determined by BCA

**Storage Buffer** 100 mM glycine, 25 mM Tris-HCl, pH 7.3.

## GENE INFORMATION

**Gene Name** [RNASEH2A ribonuclease H2 subunit A \[ Homo sapiens \(human\) \]](#)

**Official Symbol** [RNASEH2A](#)

**Synonyms** RNASEH2A; ribonuclease H2, subunit A; Aicardi Goutieres syndrome 4, ribonuclease H2, large subunit; ribonuclease H2 subunit A; AGS4; RNASEHI; RNHIA; RNHL; RNase H(35); RNase H2 subunit A; RNase HI large subunit; ribonuclease HI subunit A; ribonuclease HI large subunit; ribonuclease H2, large subunit; ribonuclease HI, large subunit; aicardi-Goutieres syndrome 4 protein; JUNB;

**Gene ID** [10535](#)

**mRNA Refseq** [NM\\_006397](#)

**Protein Refseq** [NP\\_006388](#)

 Tel: 1-631-559-9269 1-516-512-3133

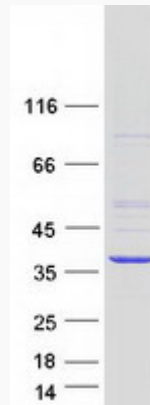
 Email: [info@creative-biomart.com](mailto:info@creative-biomart.com)  Fax: 1-631-938-8127

 45-1 Ramsey Road, Shirley, NY 11967, USA

**MIM** 606034

**UniProt ID** O75792

**SDS-PAGE**



 Tel: 1-631-559-9269 1-516-512-3133

 Email: [info@creative-biomart.com](mailto:info@creative-biomart.com)  Fax: 1-631-938-8127

 45-1 Ramsey Road, Shirley, NY 11967, USA