

# Recombinant Full Length Human RNASEH2A Protein (Met1-Leu299), N-His tagged

**Cat. No.** RNASEH2A-5552H    **Lot. No.** (See product label)

## SPECIFICATION

<b>Product Overview</b>	Recombinant human RNASEH2A (Met1-Leu299) fused with the N-His tag was expressed in E. coli.
<b>Species</b>	Human
<b>Source</b>	E.coli
<b>ProteinLength</b>	Met1-Leu299
<b>Form</b>	Lyophilized powder/frozen liquid
<b>Molecular Mass</b>	35.70 kDa
<b>Purity</b>	> 90 % as determined by SDS-PAGE
<b>Notes</b>	For research use only.
<b>Storage</b>	Use a manual defrost freezer and avoid repeated freeze thaw cycles. Store at 2 to 8 centigrade for one week. Store at -20 to -80 centigrade for twelve months from the date of receipt.
<b>Storage Buffer</b>	0.01M PBS, pH 7.4, 0.02 % NLS
<b>Reconstitution</b>	Reconstitute in sterile water for a stock solution.

 Tel: 1-631-559-9269    1-516-512-3133

 Email: [info@creative-biomart.com](mailto:info@creative-biomart.com)     Fax: 1-631-938-8127

 45-1 Ramsey Road, Shirley, NY 11967, USA

**Shipping** They are shipped out with dry ice/blue ice unless customers require otherwise.

## GENE INFORMATION

**Gene Name** RNASEH2A ribonuclease H2, subunit A [ Homo sapiens (human) ]

**Official Symbol** RNASEH2A

**Synonyms** RNASEH2A; ribonuclease H2, subunit A; Aicardi Goutieres syndrome 4, ribonuclease H2, large subunit; ribonuclease H2 subunit A; AGS4; RNASEHI; RNHIA; RNHL; RNase H (35); RNase H2 subunit A; RNase HI large subunit; ribonuclease HI subunit A; ribonuclease HI large subunit; ribonuclease H2, large subunit; ribonuclease HI, large subunit; aicardi-Goutieres syndrome 4 protein; JUNB;

**Gene ID** 10535

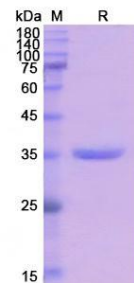
**mRNA Refseq** NM\_006397

**Protein Refseq** NP\_006388

**MIM** 606034

**UniProt ID** O75792

## SDS-PAGE



Tel: 1-631-559-9269 1-516-512-3133

Email: [info@creative-biomart.com](mailto:info@creative-biomart.com) Fax: 1-631-938-8127

45-1 Ramsey Road, Shirley, NY 11967, USA