

# Recombinant Human RNASEH2B Protein, Myc/DDK-tagged, C13 and N15-labeled

**Cat. No.** RNASEH2B-1331H    **Lot. No.** (See product label)

## SPECIFICATION

<b>Product Overview</b>	RNASEH2B MS Standard C13 and N15-labeled recombinant protein (NP_001135751) with a C-terminal MYC/DDK tag, was expressed in HEK293 cells.
<b>Species</b>	Human
<b>Source</b>	HEK293
<b>Description</b>	RNase H2 is composed of a single catalytic subunit (A) and two non-catalytic subunits (B and C) and specifically degrades the RNA of RNA:DNA hybrids. The protein encoded by this gene is the non-catalytic B subunit of RNase H2, which is thought to play a role in DNA replication. Multiple transcript variants encoding different isoforms have been found for this gene. Defects in this gene are a cause of Aicardi-Goutieres syndrome type 2 (AGS2).
<b>Molecular Mass</b>	28.8 kDa
<b>AA Sequence</b>	MAAGVDCGDGVGARQHVFLVSEYLDASKKMKNGLMFVKLVNPCSGEGAIYLFNM CLQQLFVVKVFKEKHHSWFINQSVQSGLLHFATPVDPLFLLLHYLIKADKEGKFQPL DQVVVDNVFPNCILLKLPGLEKLLHHVTEEKGNPEIDNKKYYKYSKEKTLKWLEKKV NQTVAALKTNVNVSSRVQSTAFFSGDQASTDKEEDYIRYAHGLISDYIPKELSDDL KYLKLPESASLPNPPSKMAAQRQKRGKTRTRPLEQKLISEEDLAANDILDYKDDDD KV
<b>Purity</b>	> 80% as determined by SDS-PAGE and Coomassie blue staining

 Tel: 1-631-559-9269    1-516-512-3133

 Email: [info@creative-biomart.com](mailto:info@creative-biomart.com)     Fax: 1-631-938-8127

 45-1 Ramsey Road, Shirley, NY 11967, USA

<b>Stability</b>	Stable for 3 months from receipt of products under proper storage and handling conditions.
<b>Storage</b>	Store at -80 centigrade. Avoid repeated freeze-thaw cycles.
<b>Concentration</b>	50 µg/mL as determined by BCA
<b>Storage Buffer</b>	100 mM glycine, 25 mM Tris-HCl, pH 7.3.

## GENE INFORMATION

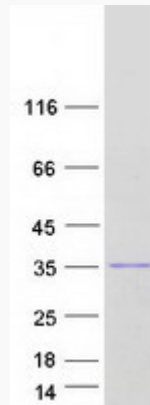
<b>Gene Name</b>	<a href="#">RNASEH2B ribonuclease H2 subunit B [ Homo sapiens (human) ]</a>
<b>Official Symbol</b>	<a href="#">RNASEH2B</a>
<b>Synonyms</b>	RNASEH2B; ribonuclease H2 subunit B; AGS2; DLEU8; ribonuclease H2 subunit B; Aicardi-Goutieres syndrome 2 protein; RNase H2 subunit B; deleted in lymphocytic leukemia 8; ribonuclease HI subunit B
<b>Gene ID</b>	<a href="#">79621</a>
<b>mRNA Refseq</b>	<a href="#">NM_001142279</a>
<b>Protein Refseq</b>	<a href="#">NP_001135751</a>
<b>MIM</b>	<a href="#">610326</a>
<b>UniProt ID</b>	<a href="#">Q5TBB1</a>

 Tel: 1-631-559-9269 1-516-512-3133

 Email: [info@creative-biomart.com](mailto:info@creative-biomart.com)  Fax: 1-631-938-8127

 45-1 Ramsey Road, Shirley, NY 11967, USA

SDS-PAGE



 Tel: 1-631-559-9269 1-516-512-3133

 Email: [info@creative-biomart.com](mailto:info@creative-biomart.com)  Fax: 1-631-938-8127

 45-1 Ramsey Road, Shirley, NY 11967, USA