

Recombinant Human RND1, His-tagged

Cat. No. RND1-3600H **Lot. No.** (See product label)

SPECIFICATION

Product Overview	Recombinant human RND1 protein, fused to His-tag at N-terminus, was expressed in E.coli and purified by using conventional chromatography (1-200 aa).
Species	Human
Source	E.coli
Description	RND1, also known as Rho 6, is Rho-related GTPases form a distinct branch of the Rho family, since they differ from other Rho proteins in size, charge, and biochemical properties. It appears to be constitutively in the activated GTP-bound form and acts as negative regulators of actin assembly and of cell adhesion. It contributes to regulating the organization of the actin cytoskeleton in response to extracellular growth factors.
Form	Liquid. 20mM Tris-HCl buffer (pH8.0) containing 30% glycerol 0.1M NaCl,1mM DTT
Molecular Weight	24.5 kDa (220aa), confirmed by MALDI-TOF (Molecular size on SDS-PAGE will appear higher)
Purity	> 95% by SDS - PAGE
Concentration	0.5 mg/ml (determined by Bradford assay)
Sequences of amino acids	MGSSHHHHHH SSGLVPRGSH MKERRAPQPV VARCKLVLVG DVQCGKTAML QVLAKDCYPE TYVPTVFENY TACLETEEQR VELSLWDTSG SPYYDNVRPL

 Tel: 1-631-559-9269 1-516-512-3133

 Email: info@creative-biomart.com  Fax: 1-631-938-8127

 45-1 Ramsey Road, Shirley, NY 11967, USA

CYSDSDAVLL CFDISRPETV DSALKKWRTE ILDYCPSTRV LLIGCKTDLR
 TDLSTLMELS HQKQAPISYE QGCAIAKQLG AEIYLEGSAF TSEKSIHSIF
 RTASMLCLNK PSPLPQKSPV

Storage

Can be stored at +4°C short term (1-2 weeks). For long term storage, aliquot and store at -20°C or -70°C. Avoid repeated freezing and thawing cycles.

GENE INFORMATION

Gene Name RND1 Rho family GTPase 1 [Homo sapiens]

Official Symbol RND1

Synonyms ARHS; RHO6; RHOS; FLJ42294; RND1; rho-related GTP-binding protein Rho6; GTP-binding protein; ras homolog gene family, member; Rho family GTPase 1; Rho6; Rnd1

Gene ID 27289

mRNA Refseq NM_014470

Protein Refseq NP_055285

MIM 609038

UniProt ID Q92730

Chromosome Location 12q12

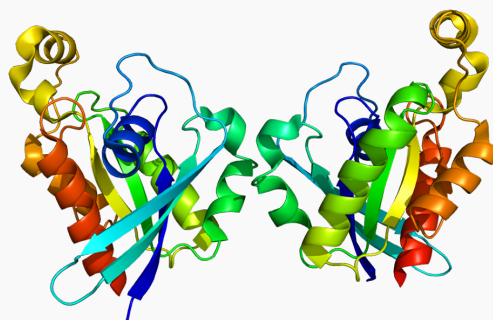
Function GTP binding; GTPase activity; nucleotide binding; protein binding; receptor binding

 Tel: 1-631-559-9269 1-516-512-3133

 Email: info@creative-biomart.com  Fax: 1-631-938-8127

 45-1 Ramsey Road, Shirley, NY 11967, USA

PDBrendering based
on 2cls.



 Tel: 1-631-559-9269 1-516-512-3133

 Email: info@creative-biomart.com  Fax: 1-631-938-8127

 45-1 Ramsey Road, Shirley, NY 11967, USA