

Recombinant Human RNF112 Protein, Myc/DDK-tagged, C13 and N15-labeled

Cat. No. RNF112-1929H **Lot. No.** (See product label)

SPECIFICATION

Product Overview

RNF112 MS Standard C13 and N15-labeled recombinant protein (NP_009079) with a C-terminal MYC/DDK tag, was expressed in HEK293 cells.

Species

Human

Source

HEK293

Description

This gene encodes a member of the RING finger protein family of transcription factors. The protein is primarily expressed in brain. The gene is located within the Smith-Magenis syndrome region on chromosome 17.

Molecular Mass

68.1 kDa

AA Sequence

MPRPALSVTSFCHRLGKREKQSFMGNSGNSWSHTPPFKLELGLGPQPMAPRELP
TCSICLERLRDPISLDCGHDFCIRCFSTHRLPGCEPPCCPECRKICKQKRGLRSLGEK
MKLLPQRPLPPALQETCPVRAEPLLLVRINASGGLILRMGAINRCLKHPLARDTPVCL
LAVLGEQHSGKSFLLNHLLQGLPGLESGEGGRPRGGEASLQGCRWGANGLARGIW
MWSHPFLLGKEGKKVAVFLVDTGDAMPELSRETRIKLCALTTMLSSYQILSTSQEL
KDTDLDYLEMFVHVAEVMGKHYGMVPIQHLDLLVRDSSHPNKAGQGHVGNIFQRLS
GRYPKVQELLQGKRARCCLLPAPGRRRMNQGHASPGDTHDDFRHLLGAYVSDVLS
AAPQHAKSRCQGYWNEGRAVARGDRLLTGQQLAQEIKNLSGWMGRTGPGFTSP
DEMAAQLHDLRKVEAAKREFEEYVRQQDVATKRIFSALRVLPDTMRNLLSTQKDAIL
ARHGVALLCKGRDQTLAELAELQATAKAFMDSYTMRFCGHLAAVGGAVGAGLMG

 Tel: 1-631-559-9269 1-516-512-3133

 Email: info@creative-biomart.com  Fax: 1-631-938-8127

 45-1 Ramsey Road, Shirley, NY 11967, USA

LAGGVVGAGMAAAALAAEAGMVAAGAAVGATGAAVVGGGVGAGLAATVGCMEKE
EDERLLEGDREPLLQEETRTRPLEQKLISEEDLAANDILDYKDDDDKV

Purity > 80% as determined by SDS-PAGE and Coomassie blue staining

Stability Stable for 3 months from receipt of products under proper storage and handling conditions.

Storage Store at -80 centigrade. Avoid repeated freeze-thaw cycles.

Concentration 50 µg/mL as determined by BCA

Storage Buffer 100 mM glycine, 25 mM Tris-HCl, pH 7.3.

GENE INFORMATION

Gene Name [RNF112 ring finger protein 112 \[Homo sapiens \(human\) \]](#)

Official Symbol [RNF112](#)

Synonyms RNF112; ring finger protein 112; BFP; ZNF179; RING finger protein 112; brain finger protein; neurolastin; zinc finger protein 179; EC 2.3.2.27

Gene ID [7732](#)

mRNA Refseq [NM_007148](#)

Protein Refseq [NP_009079](#)

MIM [601237](#)

 Tel: 1-631-559-9269 1-516-512-3133

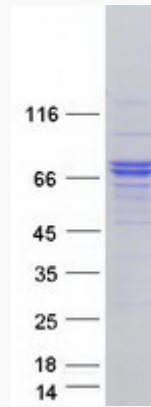
 Email: info@creative-biomart.com  Fax: 1-631-938-8127

 45-1 Ramsey Road, Shirley, NY 11967, USA

UniProt ID

Q9ULX5

SDS-PAGE



 Tel: 1-631-559-9269 1-516-512-3133

 Email: info@creative-biomart.com  Fax: 1-631-938-8127

 45-1 Ramsey Road, Shirley, NY 11967, USA