

Recombinant Human RNF220 Protein, GST-tagged

Cat. No. RNF220-4218H **Lot. No.** (See product label)

SPECIFICATION

Product Overview	Human FLJ10597 partial ORF (NP_060620, 468 a.a. - 566 a.a.) recombinant protein with GST-tag at N-terminal.
Species	Human
Source	Wheat Germ
Description	RNF220 (Ring Finger Protein 220) is a Protein Coding gene. Among its related pathways are Innate Immune System and Class I MHC mediated antigen processing and presentation. GO annotations related to this gene include ligase activity and ubiquitin-protein transferase activity.
Molecular Mass	36.63 kDa
AA Sequence	QEAMQKTCKNSDIEKITEDSAVTTFEALKARVRELERQLSRGDRYKCLICMDSYSMP LTSIQCWHVHCEECLWRLTLGAKKLCPCNTITAPGDLRRIYL
Applications	Enzyme-linked Immunoabsorbent Assay Western Blot (Recombinant protein) Antibody Production Protein Array
Notes	Best use within three months from the date of receipt of this protein.
Storage	Store at -80 centigrade. Aliquot to avoid repeated freezing and thawing.

 Tel: 1-631-559-9269 1-516-512-3133

 Email: info@creative-biomart.com  Fax: 1-631-938-8127

 45-1 Ramsey Road, Shirley, NY 11967, USA

Storage Buffer 50 mM Tris-HCl, 10 mM reduced Glutathione, pH=8.0 in the elution buffer.

GENE INFORMATION

Gene Name RNF220 ring finger protein 220 [Homo sapiens]

Official Symbol RNF220

Synonyms RNF220; ring finger protein 220; C1orf164, chromosome 1 open reading frame 164; E3 ubiquitin-protein ligase RNF220; FLJ10597; C1orf164; RP4-678E16.1;

Gene ID 55182

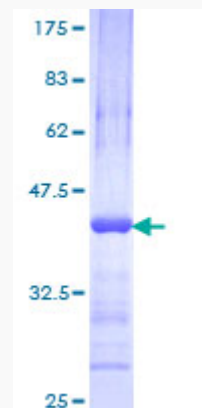
mRNA Refseq NM_018150

Protein Refseq NP_060620

MIM 616136

UniProt ID Q5VTB9

Quality Control Testing



Tel: 1-631-559-9269 1-516-512-3133

Email: info@creative-biomart.com Fax: 1-631-938-8127

45-1 Ramsey Road, Shirley, NY 11967, USA



12.5% SDS-PAGE Stained with Coomassie Blue.

 Tel: 1-631-559-9269 1-516-512-3133

 Email: info@creative-biomart.com  Fax: 1-631-938-8127

 45-1 Ramsey Road, Shirley, NY 11967, USA