

# Recombinant Human ring finger protein 31 Protein, His tagged

**Cat. No.** RNF31-001H    **Lot. No.** (See product label)

## SPECIFICATION

<b>Product Overview</b>	Recombinant human ring finger protein 31 Protein (970-1072aa) with N His tag was expressed in E. coli.
<b>Species</b>	Human
<b>Source</b>	E.coli
<b>ProteinLength</b>	970-1072aa
<b>Description</b>	The protein encoded by this gene contains a RING finger, a motif present in a variety of functionally distinct proteins and known to be involved in protein-DNA and protein-protein interactions. The encoded protein is the E3 ubiquitin-protein ligase component of the linear ubiquitin chain assembly complex. Two transcript variants encoding different isoforms have been found for this gene.
<b>Tag</b>	N-His
<b>Molecular Mass</b>	12.6 kDa
<b>AA Sequence</b>	MHHHHHHRVIEQKEVPNGLRDEACGKETPAGYAGLCQAHYKEYLVSLINAHSLDPA TLYEVEELETATERYLHVRPQPLAGEDPPAYQARLLQKLTEEVPLGQSIPRRRK
<b>Endotoxin</b>	< 0.1 EU/μg by LAL
<b>Purity</b>	> 95% by SDS-PAGE

 Tel: 1-631-559-9269    1-516-512-3133

 Email: [info@creative-biomart.com](mailto:info@creative-biomart.com)     Fax: 1-631-938-8127

 45-1 Ramsey Road, Shirley, NY 11967, USA

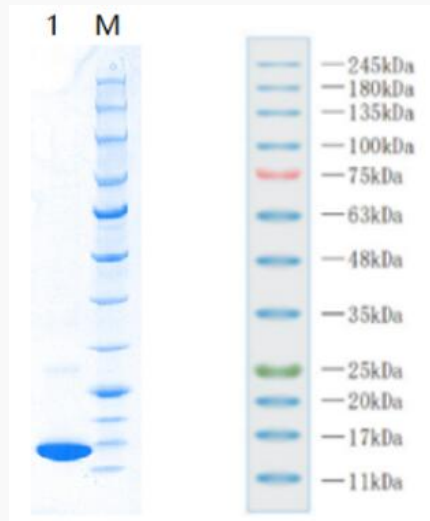
<b>Storage</b>	Store it under sterile conditions at -20 to -80 centigrade. It is recommended that the protein be aliquoted for optimal storage. Avoid repeated freeze-thaw cycles.
<b>Storage Buffer</b>	Sterile PBS, pH 7.4
<b>Concentration</b>	1.0 mg/mL
<b>GENE INFORMATION</b>	
<b>Gene Name</b>	RNF31 ring finger protein 31 [ Homo sapiens (human) ]
<b>Official Symbol</b>	RNF31
<b>Synonyms</b>	RNF31; ring finger protein 31; RING finger protein 31; FLJ10111; FLJ23501; ZIBRA; HOIL-1-interacting protein; zinc in-between-RING-finger ubiquitin-associated domain protein; HOIP; MGC19975;
<b>Gene ID</b>	55072
<b>mRNA Refseq</b>	NM_017999
<b>Protein Refseq</b>	NP_060469
<b>MIM</b>	612487
<b>UniProt ID</b>	Q96EP0

 Tel: 1-631-559-9269 1-516-512-3133

 Email: [info@creative-biomart.com](mailto:info@creative-biomart.com)  Fax: 1-631-938-8127

 45-1 Ramsey Road, Shirley, NY 11967, USA

**SDS-PAGE**



 Tel: 1-631-559-9269 1-516-512-3133

 Email: [info@creative-biomart.com](mailto:info@creative-biomart.com)  Fax: 1-631-938-8127

 45-1 Ramsey Road, Shirley, NY 11967, USA