

Recombinant Human RNLS Protein, GST-tagged

Cat. No. RNLS-437H **Lot. No.** (See product label)

SPECIFICATION

Product Overview	Human C10orf59 full-length ORF (NP_001026879.1, 1 a.a. - 342 a.a.) recombinant protein with GST-tag at N-terminal.
Species	Human
Source	Wheat Germ
Description	Renalase is a flavin adenine dinucleotide-dependent amine oxidase that is secreted into the blood from the kidney (Xu et al., 2005 [PubMed 15841207]).
Form	50 mM Tris-HCl, 10 mM reduced Glutathione, pH=8.0 in the elution buffer.
Molecular Mass	64.2 kDa
AA Sequence	MAQVLIVGAGMTGSLCAALLRRQTSGPLYLAVWDKADDSGGRMTTACSPHNPQCT ADLGAQYITCTPHYAKKHQRFYDELLAYGVLRLSSPIEGMVMKEGDCNFVAPQGIS SIIKHYLKESGAEVYFRHRVTQINLRDDKWEVSKQTGSPEQFDLIVLTMPVPEILQLQ GDITTLISECQRQQLEAVSYSSRYALGLFYEAGTKIDVPWAGQYITSNPCIRFV SIDNK KRNIESSEIGPSLVIHTTVPFGVTYLEHSIEDVQELVFQLENILPGLPQPIATKCQKW RHSQVTNAAANCPGQMTLHHPFLACGGDGFTQSNFDGCITSALCVLEALKNYI
Quality Control Test	12.5% SDS-PAGE Stained with Coomassie Blue.
Storage	Store at -80 centigrade. Aliquot to avoid repeated freezing and thawing.

 Tel: 1-631-559-9269 1-516-512-3133

 Email: info@creative-biomart.com  Fax: 1-631-938-8127

 45-1 Ramsey Road, Shirley, NY 11967, USA

Storage Buffer 50 mM Tris-HCl, 10 mM reduced Glutathione, pH=8.0 in the elution buffer.

GENE INFORMATION

Gene Name RNLS renalase, FAD dependent amine oxidase [Homo sapiens (human)]

Official Symbol RNLS

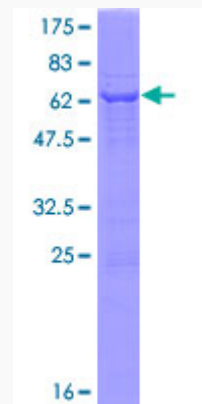
Synonyms C10orf59; RENALASE

Gene ID 55328

mRNA Refseq NM_001031709.1

Protein Refseq NP_001026879.1

UniProt ID Q5VYX0.1



 Tel: 1-631-559-9269 1-516-512-3133

 Email: info@creative-biomart.com  Fax: 1-631-938-8127

 45-1 Ramsey Road, Shirley, NY 11967, USA