

Recombinant Full Length Human RNPEP Protein, C-Flag-tagged

Cat. No. RNPEP-2003HFL **Lot. No.** (See product label)

SPECIFICATION

Product Overview	Recombinant Full Length Human RNPEP Protein, fused to Flag-tag at C-terminus, was expressed in Mammalian cells.
Species	Human
Source	Mammalian Cells
Description	Predicted to enable metalloaminopeptidase activity. Predicted to be involved in proteolysis. Located in extracellular exosome.
Form	25 mM Tris HCl, pH 7.3, 100 mM glycine, 10% glycerol.
Molecular Mass	72.4 kDa
AA Sequence	<p>MASGEHSPGSGAARRPLHSAQAVDVASASNFRAFELLHLHLDLRAEFGPPPGAG SRGLSGTAVLDRCL EPEGAAELRLDSHPCLEVTAALRRERPGSEPPAEPVSFY TQPFSHYGQALCVSFPQPCRAAERLQVLL TYRVGEGPGVCWLAPEQTAGKKKPFV YTQQQAVLNRAFFPCFDTPAVKYKYSALIEVPDGFTA VMSASTW EKRGPNKFFFQ MCQPIPSYLIALAIGDLVSAEVGPRSRVWAEPCLIDAAKEEYNGVIEEFLATGEKLF P YVWGRYDLLFMPPSFPFGGMENPCLTFVTPCLLAGDRSLADVIIHEISHWFGNLV TNANWGEFWLNEGF TMYAQRRISTILFGAAYTCLEAATGRALLRQHMDITGEENPL NKL RVKIEPGVDPDDTYNETPYEKGF CF VSYLAHLVGDQDQFDSFLKAYVHEFKFR SILADDFLDFYLEYFPELKKRVDIIPGFEDRWLNTPGWPP YLPDLSPGDSL MKPA EELAQLWAAEELDMKAIEAVAISPWKTYQLVYFLDKILQKSPLPPGNVKKLGDY PSI</p>

 Tel: 1-631-559-9269 1-516-512-3133

 Email: info@creative-biomart.com  Fax: 1-631-938-8127

 45-1 Ramsey Road, Shirley, NY 11967, USA

SNARNAELRLRWGQIVLKNHQEDFWKVKEFLHNQGGKQKYTLPLYHAMMGGSEVA
 QTLAKETFASTA SQLHSNVVNYVQQIVAPKGS TRTRPLEQKLISEEDLAANDILDYK
 DDDDKV

Purity > 80% as determined by SDS-PAGE and Coomassie blue staining.

Stability Stable for 12 months from the date of receipt of the product under proper storage and handling conditions. Avoid repeated freeze-thaw cycles.

Storage Store at -80 centigrade.

Concentration >50 ug/mL as determined by microplate BCA method.

Preparation Recombinant protein was captured through anti-DDK affinity column followed by conventional chromatography steps.

Protein Families Druggable Genome, Protease, Secreted Protein

Full Length Full L.

GENE INFORMATION

Gene Name [RNPEP arginyl aminopeptidase \[Homo sapiens \(human\) \]](#)

Official Symbol [RNPEP](#)

Synonyms APB; AP-B

Gene ID [6051](#)

mRNA Refseq [NM_020216.4](#)

 Tel: 1-631-559-9269 1-516-512-3133

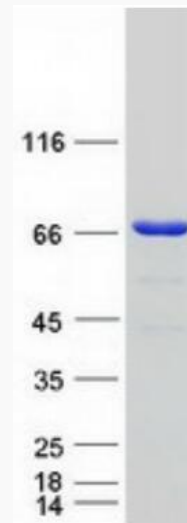
 Email: info@creative-biomart.com  Fax: 1-631-938-8127

 45-1 Ramsey Road, Shirley, NY 11967, USA

Protein Refseq NP_064601.3

MIM 602675

UniProt ID Q9H4A4



Coomassie blue staining of purified RNPEP protein.

 Tel: 1-631-559-9269 1-516-512-3133

 Email: info@creative-biomart.com  Fax: 1-631-938-8127

 45-1 Ramsey Road, Shirley, NY 11967, USA