

Recombinant Human RNPEP Protein, Myc/DDK-tagged, C13 and N15-labeled

Cat. No. RNPEP-6348H Lot. No. (See product label)

SPECIFICATION

Product Overview	RNPEP MS Standard C13 and N15-labeled recombinant protein (NP_064601) with a C-terminal MYC/DDK tag, was expressed in HEK293 cells.
Species	Human
Source	HEK293
Description	Exopeptidase which selectively removes arginine and/or lysine residues from the N-terminus of several peptide substrates including Arg(0)-Leu-enkephalin, Arg(0)-Met-enkephalin and Arg(-1)-Lys(0)-somatostatin-14. Can hydrolyze leukotriene A4 (LTA-4) into leukotriene B4 (LTB-4).
Molecular Mass	72.4 kDa
AA Sequence	MASGEHSPGSGAARRPLHSAQAVDVASASNFRAFELLHLHLDLRAEFGPPGPGAG SRGLSGTAVLDLRCLEPEGAAELRLDShPCLEVTAALRRERPGSEPPAEPVSFYT QPFSHYGQALCVSFPQPCRAAERLQVLLTYRVGEGPGVCWLAPEQTAGKKKPFVY TQGQAVLNRAFFPCFDTPAVKYKYSALIEVPDGFTAVMSASTWEKRGPNKFFFQMC QPIPSYLIALAIGDLVSAEVGPRSRVWAEPCLIDAAKEEYNGVIEEFLATGEKLFPGPYV WGRYDLLFMPPSFPFGGMENPCLTFVTPCLLAGDRSLADVIIHEISHWFGNLTNA NWGEFWLNEGFTMYAQRRIStILFGAAyTCLEAATGRALLRQHMDITGEENPLNKLK VKIEPGVDPDDTYNETPYEKGFVSYLAHLVGDQDQFDSFLKAYVHEFKFRSILAD DFLDFYLEYFPELKKKRVDIIPGFEFDRWLNTPGWPPYLPDLSPGDslMKPAEELAQ

Tel: 1-631-559-9269 1-516-512-3133

Email: info@creative-biomart.com Fax: 1-631-938-8127

45-1 Ramsey Road, Shirley, NY 11967, USA



LWAAEELDMKAIEAVAISPWKTYQLVYFLDKILQKSPLPPGNVKKLGGDTYPSISNARN
AELRLRWGQIVLKNHQEDFWKVKEFLHNQGGKQKYTLPLYHAMMGSEVAQTLAK
ETFASTASQLHSNVVNYVQQIVAPKGGSTRTRPLEQKLISEEDLAANDILDYKDDDDKV

Purity > 80% as determined by SDS-PAGE and Coomassie blue staining

Stability Stable for 3 months from receipt of products under proper storage and handling conditions.

Storage Store at -80 centigrade. Avoid repeated freeze-thaw cycles.

Concentration 50 µg/mL as determined by BCA

Storage Buffer 100 mM glycine, 25 mM Tris-HCl, pH 7.3.

GENE INFORMATION

Gene Name RNPEP arginyl aminopeptidase [Homo sapiens (human)]

Official Symbol RNPEP

Synonyms RNPEP; arginyl aminopeptidase (aminopeptidase B); aminopeptidase B; AP-B; arginine aminopeptidase; DKFZp547H084;

Gene ID 6051

mRNA Refseq NM_020216

Protein Refseq NP_064601

MIM 602675

Tel: 1-631-559-9269 1-516-512-3133

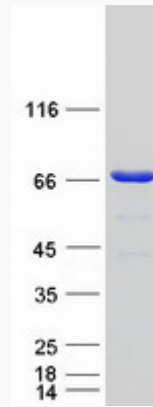
Email: info@creative-biomart.com Fax: 1-631-938-8127

45-1 Ramsey Road, Shirley, NY 11967, USA

UniProt ID

Q9H4A4

SDS-PAGE



 Tel: 1-631-559-9269 1-516-512-3133

 Email: info@creative-biomart.com  Fax: 1-631-938-8127

 45-1 Ramsey Road, Shirley, NY 11967, USA