

# Recombinant Mouse ROBO1 Protein (880-1612 aa), His-tagged

Cat. No. ROBO1-2415M Lot. No. (See product label)

## SPECIFICATION

<b>Product Overview</b>	Recombinant Mouse ROBO1 Protein (880-1612 aa) is produced by Yeast expression system. This protein is fused with a 6xHis tag at the N-terminal. Research Area: Cancer. Protein Description: Partial.
<b>Species</b>	Mouse
<b>Source</b>	Yeast
<b>ProteinLength</b>	880-1612 aa
<b>Description</b>	Receptor for SLIT1 and SLIT2 that mediates cellular responses to molecular guidance cues in cellular migration, including axonal navigation at the ventral midline of the neural tube and projection of axons to different regions during neuronal development. Interaction with the intracellular domain of FLRT3 mediates axon attraction towards cells expressing NTN1. In axon growth cones, the silencing of the attractive effect of NTN1 by SLIT2 may require the formation of a ROBO1-DCC complex. Plays a role in the regulation of cell migration via its interaction with MYO9B; inhibits MYO9B-mediated stimulation of RHOA GTPase activity, and thereby leads to increased levels of active, GTP-bound RHOA. May be required for lung development.
<b>Form</b>	Tris-based buffer, 50% glycerol
<b>Molecular Mass</b>	82.0 kDa
<b>AA Sequence</b>	YRHRKKRNGLTSTYAGIRKVPSTFTPTVTYQRGGEAVSSGGRPGLLNISEPATQP

 Tel: 1-631-559-9269 1-516-512-3133

 Email: [info@creative-biomart.com](mailto:info@creative-biomart.com)  Fax: 1-631-938-8127

 45-1 Ramsey Road, Shirley, NY 11967, USA

WLADTWPNTGNNHNDCSINCCTAGNGNSDSNLTTYSRPADCIANYNNQLDNKQTN  
 LMLPESTVYGDVDLSNKINEMKTFNSPNLKDGRFVNPSGQPTPYATTQLIQANLSSN  
 MNNGAGDSSEKHWKPPGQKPEVAPIQYNIMEQNKLNDYRANDTIPPTIPYNQSY  
 DQNTGGSYNSSDRGSSTSGSQGHKKGARTPKAPKQGGMNWADLLPPPPAHPPPH  
 SNSEEYNMSVDESYDQEMPCPVPPAPMYLQQDELQEEEDERGPTPPVPGAASSP  
 AAVSYSHQSTATLTSPQEELQPMLQDCPEDLGHMPHPPDRRRQPVSPPPPRPIS  
 PPHTYGYISGPLVSDMDTDAPEEEEEDEADMEVAKMQTRRRLLRGLAQTPASSVGD  
 ESSVTGSMINGWGSASEEDNISSGRSSVSSSDGSFFTDADFAQAVAAAAEYAGLKV  
 ARRQMQDAAGRHRFHASQCPRPTSPVSTDSNMSAVVIQKARPAKKQKHQPGHLR  
 REAYADDLPPPPVPPPAIKSPTVQSKAQLEVRPVMVPKLASIEARTDRSSDRKGGSY  
 KGREALDGRQVTDLRTNPSDPREAEQEPNDGKGRGTRQPKRDLPPAKTHLGQEDI  
 LPYCRPTFPTSNNPRDPSSSSSMSSRGSGSRQREQANVGRRNMAEMQVLGGFER  
 GDENNEELEETES

**Purity** > 90% as determined by SDS-PAGE.

**Notes** Repeated freezing and thawing is not recommended. Store working aliquots at 4 centigrade for up to one week.

**Storage** The shelf life is related to many factors, storage state, buffer ingredients, storage temperature and the stability of the protein itself. Generally, the shelf life of liquid form is 6 months at -20 centigrade/-80 centigrade. The shelf life of lyophilized form is 12 months at -20 centigrade/-80 centigrade.

**Concentration** A hardcopy of COA will be sent along with the products. Please refer to it for detailed information.

## GENE INFORMATION

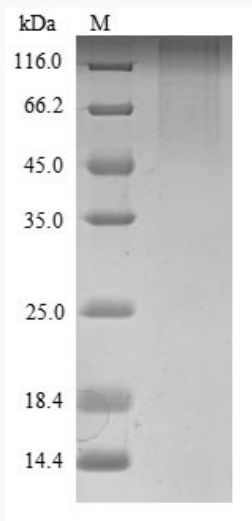
**Gene Name** [Robo1 roundabout homolog 1 \(Drosophila\) \[ Mus musculus \]](#)

 Tel: 1-631-559-9269 1-516-512-3133

 Email: [info@creative-biomart.com](mailto:info@creative-biomart.com)  Fax: 1-631-938-8127

 45-1 Ramsey Road, Shirley, NY 11967, USA

<b>Official Symbol</b>	ROBO1
<b>Synonyms</b>	ROBO1; roundabout homolog 1 (Drosophila); roundabout homolog 1; DUTT1; Gm310; AW494633; AW742721;
<b>Gene ID</b>	19876
<b>mRNA Refseq</b>	NM_019413
<b>Protein Refseq</b>	NP_062286
<b>UniProt ID</b>	O89026



(Tris-Glycine gel) Discontinuous SDS-PAGE (reduced) with 5% enrichment gel and 15% separation gel.

Tel: 1-631-559-9269 1-516-512-3133

Email: [info@creative-biomart.com](mailto:info@creative-biomart.com) Fax: 1-631-938-8127

45-1 Ramsey Road, Shirley, NY 11967, USA