

# Recombinant Human ROBO1 Protein, Myc/DDK-tagged, C13 and N15-labeled

**Cat. No.** ROBO1-4672H    **Lot. No.** (See product label)

## SPECIFICATION

<b>Product Overview</b>	ROBO1 MS Standard C13 and N15-labeled recombinant protein (NP_001139316) with a C-terminal MYC/DDK tag, was expressed in HEK293 cells.
<b>Species</b>	Human
<b>Source</b>	HEK293
<b>Description</b>	Bilateral symmetric nervous systems have special midline structures that establish a partition between the two mirror image halves. Some axons project toward and across the midline in response to long-range chemoattractants emanating from the midline. The product of this gene is a member of the immunoglobulin gene superfamily and encodes an integral membrane protein that functions in axon guidance and neuronal precursor cell migration. This receptor is activated by SLIT-family proteins, resulting in a repulsive effect on glioma cell guidance in the developing brain. A related gene is located at an adjacent region on chromosome 3. Multiple transcript variants encoding different isoforms have been found for this gene.
<b>Molecular Mass</b>	175.7 kDa
<b>AA Sequence</b>	MIAEPAHFYLFGLICLCSGSRLRQEDFPPRIVEHPSDLIVSKGEPATLNCKAEGRPTPTIEWYKGGERVETDKDDPRSHRMLLPSSGLFFLRIVHGRKSRPDEGVYVCVARNYLGEAVSHNASLEVAILRDDFRQNPSPDVMVAVGEPAVMECQPPRGHPEPTISWKKDGSPLDDKDERITIRGGKLMITYTRKSDAGKYVCVGTNMVGERESEVAELTVLERPSFV

 Tel: 1-631-559-9269    1-516-512-3133

 Email: [info@creative-biomart.com](mailto:info@creative-biomart.com)     Fax: 1-631-938-8127

 45-1 Ramsey Road, Shirley, NY 11967, USA



KRPSNLAVTVDDSAEFKCEARGDPVPTVRWRKDDGELPKSRYEIRDDHTLKIRKVT  
 AGDMGSYTCVAENMVGKAEASATLTVQVGSEPPHFVVKPRDQVVALGRTVTFQCE  
 ATGNPQPAIFWRREGSQNLLFSYQPPQSSSRFSVSQTGDLTITNVQRSVDVGYICQ  
 TLNVAGSIITKAYLEVTDVIADRPPPVRQGPVNQTVAVDGTFLVSCVATGSPVPTILW  
 RKDGVLVSTQDSRIKQLENGVLQIRYAKLGDGTGRYTCLASTPSGEATWSAYIEVQEF  
 GVPVQPPRPTDNLIPSAPSKPEVTDVSRNTVTLVSWQPNLNSGATPTSIIIEAFSHAS  
 GSSWQTVVAENVKTETSAIKGLKPNAIYFLVRAANAYGISDPSQISDPVKTQDVLPTS  
 QGVDHKVQVRELGNAVLHLHNPTVLSSSSIEVHWTVDQQSQYIQGYKILYRPSGAN  
 HGESDWLVFEVRTPAKNSVIPDLRKGVNIEIKARPPFFNEFQGADSEIKFAKTLEEA  
 PSAPPQGVTVSKNDGNGTAILVSWQPPPEDTQNGMVQEYKVVCLGNETRYHINKT  
 VDGSTFSVIPFLVPGIRYSVEVAASTGAGSGVKSEPQFIQLDAHGNPVSPEDQVSL  
 AQQISDVVKQPAFIAGIGAACWILMVFSIWLYRHRKKRNGLTSTYAGIRKVITYQRGG  
 EAVSSGGRPGLLNISEPAAQPWLADTWPNTGNNHNDCSISCCTAGNGNSDSNLTT  
 YSRPADCIANYNNQLDNKQTNLMLPESTVYGDVDSLKNINEMKTFNSPNLKDGRFV  
 NPSGQPTYATTQLIQSNLSNMNNGSGDSGEKHWKPLGQQKQEVAPVQYNIVEQ  
 NKLNKDYRANDTVPTIPYNQSYDQNTGGSYNSSDRGSSSTSGSQGHKKGARTPKV  
 PKQGGMNWADLLPPPPAHPPPHSNSEEYNISVDESVDQEMPCPVPPARMYLQQDE  
 LEEEEEDERGPTPPVIRGAASSPAAVSYSHQSTATLTPSPQEELQPMLQDCPEETGH  
 MQHQPDORRRQPVSPPPPRPISPPHTYGYISGPLVSDMDTDAPEEEEEDEADMEVA  
 KMQTRRLLLRGLEQTPASSVGDLESSVTGSMINGWGSASEEDNISSGRSSVSSSDG  
 SFFTDADFAQAVAAAAEYAGLKVARRQMQDAAGRHRFHASQCPRPTSPVSTDSNM  
 SAAVMQKTRPAKCLKHQPHLRRETYTDDLPPPPVPPPAIKSPTAQSKTQLEVRPV  
 VVPKLPMSDARTDRSSDRKGSYKGREVLDGRQVDMRTNPGDPREAEQQNDG  
 KGRGNKAAKRDLPKAKTHLIQEDILPYCRPTFPTSNNPRDPSSSSSMSSRGSRSRQ  
 REQANVGRRNIAEMQVLGGYERGEDNNEELEEESTRTRPLEQKLISEEDLAANDIL  
 DYKDDDDKV

<b>Purity</b>	> 80% as determined by SDS-PAGE and Coomassie blue staining
<b>Stability</b>	Stable for 3 months from receipt of products under proper storage and handling

Tel: 1-631-559-9269 1-516-512-3133

Email: [info@creative-biomart.com](mailto:info@creative-biomart.com) Fax: 1-631-938-8127

45-1 Ramsey Road, Shirley, NY 11967, USA

conditions.

**Storage** Store at -80 centigrade. Avoid repeated freeze-thaw cycles.

**Concentration** 50 µg/mL as determined by BCA

**Storage Buffer** 100 mM glycine, 25 mM Tris-HCl, pH 7.3.

## GENE INFORMATION

**Gene Name** [ROBO1 roundabout guidance receptor 1 \[ Homo sapiens \(human\) \]](#)

**Official Symbol** [ROBO1](#)

**Synonyms** ROBO1; roundabout, axon guidance receptor, homolog 1 (Drosophila); roundabout (axon guidance receptor, Drosophila) homolog 1; roundabout homolog 1; DUTT1; FLJ21882; SAX3; deleted in U twenty twenty; MGC131599; MGC133277;

**Gene ID** [6091](#)

**mRNA Refseq** [NM\\_001145844](#)

**Protein Refseq** [NP\\_001139316](#)

**MIM** [602430](#)

**UniProt ID** [Q9Y6N7](#)

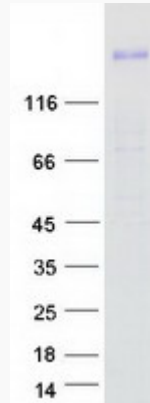
 Tel: 1-631-559-9269 1-516-512-3133

 Email: [info@creative-biomart.com](mailto:info@creative-biomart.com)  Fax: 1-631-938-8127

 45-1 Ramsey Road, Shirley, NY 11967, USA



SDS-PAGE



Tel: 1-631-559-9269 1-516-512-3133

Email: [info@creative-biomart.com](mailto:info@creative-biomart.com) Fax: 1-631-938-8127

45-1 Ramsey Road, Shirley, NY 11967, USA