

Recombinant Human ROBO4 protein, His-tagged

Cat. No. ROBO4-3792H Lot. No. (See product label)

SPECIFICATION

Product Overview	Recombinant Human ROBO4 protein(Q8WZ75-1)(Ala27-Glu469), fused with C-terminal His tag, was expressed in HEK293.
Species	Human
Source	HEK293
ProteinLength	Ala27-Glu469
Tag	C-His
Form	Lyophilized from 0.22µm filtered solution in PBS (pH 7.4). Normally 5% trehalose is added as protectant before lyophilization.
Bio-activity	Immobilized Human ROBO4, His Tag at 0.5ug/ml (100ul/Well) on the plate. Dose response curve for Anti-ROBO4 Antibody, hFc Tag with the EC50 of 6.8ng/ml determined by ELISA.
Molecular Mass	The protein has a predicted MW of 47.8 kDa. Due to glycosylation, the protein migrates to 55-70 kDa based on Tris-Bis PAGE result.
Endotoxin	Less than 1EU per µg by the LAL method.
Purity	> 95% as determined by Tris-Bis PAGE;> 95% as determined by HPLC

 Tel: 1-631-559-9269 1-516-512-3133

 Email: info@creative-biomart.com  Fax: 1-631-938-8127

 45-1 Ramsey Road, Shirley, NY 11967, USA

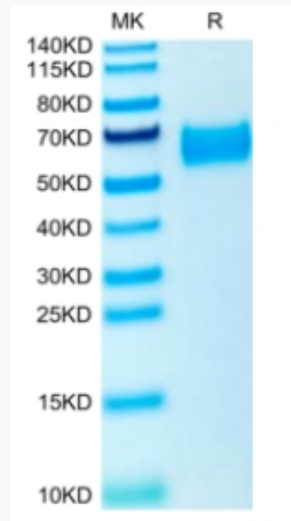
Storage	Reconstituted protein stable at -80°C for 12 months, 4°C for 1 week. Use a manual defrost freezer and avoid repeated freeze-thaw cycles.
Reconstitution	Centrifuge tubes before opening. Reconstituting to a concentration more than 100 µg/ml is recommended. Dissolve the lyophilized protein in distilled water.
GENE INFORMATION	
Gene Name	ROBO4 roundabout, axon guidance receptor, homolog 4 (Drosophila) [Homo sapiens]
Official Symbol	ROBO4
Synonyms	ROBO4; roundabout, axon guidance receptor, homolog 4 (Drosophila); roundabout homolog 4 (Drosophila); roundabout homolog 4; ECSM4; FLJ20798; magic roundabout; MRB; roundabout homolog 4, magic roundabout; MGC133352; MGC133353;
Gene ID	54538
mRNA Refseq	NM_019055
Protein Refseq	NP_061928
MIM	607528
UniProt ID	Q8WZ75

 Tel: 1-631-559-9269 1-516-512-3133

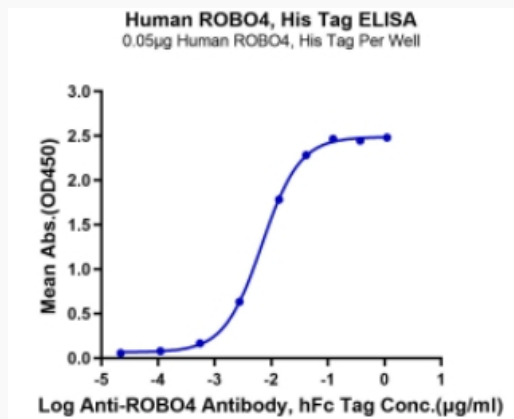
 Email: info@creative-biomart.com  Fax: 1-631-938-8127

 45-1 Ramsey Road, Shirley, NY 11967, USA

Tris-Bis PAGE



ELISA Data



 Tel: 1-631-559-9269 1-516-512-3133

 Email: info@creative-biomart.com  Fax: 1-631-938-8127

 45-1 Ramsey Road, Shirley, NY 11967, USA