

# Recombinant Human ROMO1 Protein, Myc/DDK-tagged, C13 and N15-labeled

**Cat. No.** ROMO1-2578H    **Lot. No.** (See product label)

## SPECIFICATION

<b>Product Overview</b>	ROMO1 MS Standard C13 and N15-labeled recombinant protein (NP_542786) with a C-terminal MYC/DDK tag, was expressed in HEK293 cells.
<b>Species</b>	Human
<b>Source</b>	HEK293
<b>Description</b>	The protein encoded by this gene is a mitochondrial membrane protein that is responsible for increasing the level of reactive oxygen species (ROS) in cells. The protein also has antimicrobial activity against a variety of bacteria by inducing bacterial membrane breakage.
<b>Molecular Mass</b>	8.2 kDa
<b>AA Sequence</b>	MPVAVGPYQSQPSCFDRVKMGFVMGCAVGMAGALFGTFSCLRIGMRGRELMG GIGKTMMSQSGGTGTFMAIGMGIRCTRTRPLEQKLISEEDLAANDILDYKDDDDKV
<b>Purity</b>	> 80% as determined by SDS-PAGE and Coomassie blue staining
<b>Stability</b>	Stable for 3 months from receipt of products under proper storage and handling conditions.
<b>Storage</b>	Store at -80 centigrade. Avoid repeated freeze-thaw cycles.

 Tel: 1-631-559-9269    1-516-512-3133

 Email: [info@creative-biomart.com](mailto:info@creative-biomart.com)     Fax: 1-631-938-8127

 45-1 Ramsey Road, Shirley, NY 11967, USA

**Concentration** 50 µg/mL as determined by BCA

**Storage Buffer** 100 mM glycine, 25 mM Tris-HCl, pH 7.3.

## GENE INFORMATION

**Gene Name** ROMO1 reactive oxygen species modulator 1 [ Homo sapiens (human) ]

**Official Symbol** ROMO1

**Synonyms**

ROMO1; reactive oxygen species modulator 1; MTGM; MTGMP; C20orf52; bA353C18.2; reactive oxygen species modulator 1; PCM19; ROS modulator 1; epididymis tissue protein Li 175; glyrichin; mitochondrial targeting GXXXG protein; mitochondrial targeting GxxxG motif protein; protein MGR2 homolog

**Gene ID** 140823

**mRNA Refseq** NM\_080748

**Protein Refseq** NP\_542786

**MIM** 618894

**UniProt ID** P60602

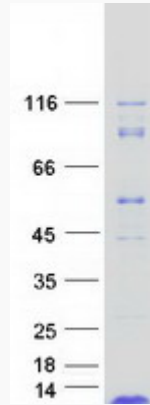
 Tel: 1-631-559-9269 1-516-512-3133

 Email: [info@creative-biomart.com](mailto:info@creative-biomart.com)  Fax: 1-631-938-8127

 45-1 Ramsey Road, Shirley, NY 11967, USA



SDS-PAGE



Tel: 1-631-559-9269 1-516-512-3133

Email: [info@creative-biomart.com](mailto:info@creative-biomart.com) Fax: 1-631-938-8127

45-1 Ramsey Road, Shirley, NY 11967, USA