

Recombinant Human ROPN1 protein, His-tagged

Cat. No. ROPN1-4432H Lot. No. (See product label)

SPECIFICATION

Product Overview	Recombinant Human ROPN1 protein(Q9HAT0)(1-212aa), fused with C-terminal His tag, was expressed in E.coli.
Species	Human
Source	E.coli
ProteinLength	1-212aa
Form	If the delivery form is liquid, the default storage buffer is Tris/PBS-based buffer, 5%-50% glycerol. If the delivery form is lyophilized powder, the buffer before lyophilization is Tris/PBS-based buffer, 6% Trehalose, pH 8.0.
Molecular Mass	30.8 kDa
Purity	Greater than 90% as determined by SDS-PAGE.
Storage	Store at -20°C/-80°C upon receipt, aliquoting is necessary for mutiple use. Avoid repeated freeze-thaw cycles.
Reconstitution	We recommend that this vial be briefly centrifuged prior to opening to bring the contents to the bottom. Please reconstitute protein in deionized sterile water to a concentration of 0.1-1.0 mg/mL. We recommend to add 5-50% of glycerol (final concentration) and aliquot for long-term storage at -20°C/-80°C.

 Tel: 1-631-559-9269 1-516-512-3133

 Email: info@creative-biomart.com  Fax: 1-631-938-8127

 45-1 Ramsey Road, Shirley, NY 11967, USA

AA Sequence

MAQTDKPTCIPPELPKMLKEFAKAAIRVQPQDLIQWAADYFEALSRGETPPVRERSE
 RVALCNRAELTPELLKILHSQVAGRLIIRAEELAQMWKVVNLPTDLFNSVMNVGRFTE
 EIEWLKFLALACCSALGVTITKTLKIVCEVLSCDHNGGSPRIPFSTFQFLYTYIAKVDGEI
 SASHVSRMLNYMEQEVIQPDGIITVNDFTQNPRVQLE

GENE INFORMATION

Gene Name [ROPN1 rhopilin associated tail protein 1 \[Homo sapiens \]](#)

Official Symbol [ROPN1](#)

Synonyms ROPN1; rhopilin associated tail protein 1; ropporin, rhopilin associated protein 1; ropporin-1A; cancer/testis antigen 91; CT91; ODF6; ROPN1A; ropporin; rhopilin-associated protein 1A; outer dense fiber of sperm tails 6; RHPNAP1; DKFZp434B1222;

Gene ID [54763](#)

mRNA Refseq [NM_017578](#)

Protein Refseq [NP_060048](#)

MIM [611757](#)

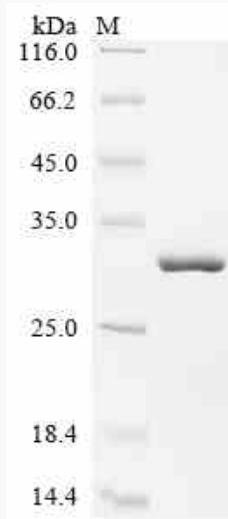
UniProt ID [Q9HAT0](#)

 Tel: 1-631-559-9269 1-516-512-3133

 Email: info@creative-biomart.com  Fax: 1-631-938-8127

 45-1 Ramsey Road, Shirley, NY 11967, USA

SDS-PAGE



 Tel: 1-631-559-9269 1-516-512-3133

 Email: info@creative-biomart.com  Fax: 1-631-938-8127

 45-1 Ramsey Road, Shirley, NY 11967, USA