

Recombinant Human ROPN1L protein, His-tagged

Cat. No. ROPN1L-2357H Lot. No. (See product label)

SPECIFICATION

Product Overview	Recombinant Human ROPN1L protein(1-230 aa), fused with N-terminal His tag, was expressed in E.coli.
Species	Human
Source	E.coli
ProteinLength	1-230 aa
Form	The purified protein was Lyophilized from sterile PBS (58mM Na ₂ HPO ₄ , 17mM NaH ₂ PO ₄ , 68mM NaCl, pH7.4). 5 % trehalose and 5 % mannitol are added as protectant before lyophilization.
AASequence	MPLPDTMFCAQQIHIPPELPDILKQFTKAAIRTQPADVLRWSAGYFSALSARGDPLPVK DRMEMPTATQKTDTGLTQGLLKVLHKQCHHKRYVELTDLEQKWKNLCLPKEKFKAL LQLDPCENKIKWINFLALGCSMLGGSLNTALKHLCEILTDDREGGPARIPFKTFSYVY RYLARLSDSDVSPLETESYLASLKENIDARKNGMIGLSDFFFFPKRKLLESIENSEDVGH
Purity	80%, by SDS-PAGE with Coomassie Brilliant Blue staining.
Storage	Store at 2-8°C for 1-2 weeks. Aliquot and store at -20°C to -80°C for up to 3 months, reconstitution with sterile water and addition of an equal volume of glycerol. Avoid repeat freeze-thaw cycles.
Reconstitution	Dissolve the product in 200 µl sterile water to achieve a working concentration of 0.25

 Tel: 1-631-559-9269 1-516-512-3133

 Email: info@creative-biomart.com  Fax: 1-631-938-8127

 45-1 Ramsey Road, Shirley, NY 11967, USA

g/μl. If experimental compatibility allows, mix the aqueous solution with an equal volume of glycerol (1:1 ratio) after initial reconstitution.

GENE INFORMATION

Gene Name	ROPN1L rhopilin associated tail protein 1-like [Homo sapiens]
Official Symbol	ROPN1L
Synonyms	ROPN1L; rhopilin associated tail protein 1-like; ropporin 1 like; ropporin-1-like protein; ASP; FLJ25776; radial spoke head 11 homolog (Chlamydomonas); RSPH11; ropporin 1-like; ROPN1-like protein; radial spoke head 11 homolog; AKAP-associated sperm protein; FLJ23003;
Gene ID	83853
mRNA Refseq	NM_001201466
Protein Refseq	NP_001188395
MIM	611756
UniProt ID	Q96C74

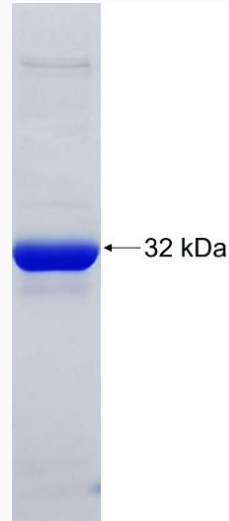
 Tel: 1-631-559-9269 1-516-512-3133

 Email: info@creative-biomart.com  Fax: 1-631-938-8127

 45-1 Ramsey Road, Shirley, NY 11967, USA



SDS-PAGE



Tel: 1-631-559-9269 1-516-512-3133

Email: info@creative-biomart.com Fax: 1-631-938-8127

45-1 Ramsey Road, Shirley, NY 11967, USA