

Recombinant Human ROPN1L Protein, Myc/DDK-tagged, C13 and N15-labeled

Cat. No. ROPN1L-3464H **Lot. No.** (See product label)

SPECIFICATION

Product Overview	ROPN1L MS Standard C13 and N15-labeled recombinant protein (NP_114122) with a C-terminal MYC/DDK tag, was expressed in HEK293 cells.
Species	Human
Source	HEK293
Description	This gene encodes a member of the ropporin family. The encoded protein is present in sperm and interacts with A-kinase anchoring protein, AKAP3, through the amphipathic helix region of AKAP3. Alternatively spliced transcript variants have been found for this gene.
Molecular Mass	26.2 kDa
AA Sequence	MPLPDTMFCAQQIHIPPELPDILKQFTKAAIRTQPADVLRWSAGYFSALSARGDPLPVK DRMEMPTATQKTDTGLTQGLLKV LHKQCHHKRYVELTDLEQKWKNLCLPKEKFKAL LQLDPCENKIKWINFLALGCSMLGGSLNTALKHLCEILTDDREGGPARIPFKTFSYVY RYLARLSDSDVSPLETESYLASLKENIDARKNGMIGLSDFFFFPKRKLLESIENSEDEVGH TRTRPLEQKLISEEDLAANDILDYKDDDDKV
Purity	> 80% as determined by SDS-PAGE and Coomassie blue staining
Stability	Stable for 3 months from receipt of products under proper storage and handling conditions.

 Tel: 1-631-559-9269 1-516-512-3133

 Email: info@creative-biomart.com  Fax: 1-631-938-8127

 45-1 Ramsey Road, Shirley, NY 11967, USA

Storage	Store at -80 centigrade. Avoid repeated freeze-thaw cycles.
Concentration	50 µg/mL as determined by BCA
Storage Buffer	100 mM glycine, 25 mM Tris-HCl, pH 7.3.
GENE INFORMATION	
Gene Name	ROPN1L rophilin associated tail protein 1-like [Homo sapiens (human)]
Official Symbol	ROPN1L
Synonyms	ROPN1L; rophilin associated tail protein 1-like; ropporin 1 like; ropporin-1-like protein; ASP; FLJ25776; radial spoke head 11 homolog (Chlamydomonas); RSPH11; ropporin 1-like; ROPN1-like protein; radial spoke head 11 homolog; AKAP-associated sperm protein; FLJ23003;
Gene ID	83853
mRNA Refseq	NM_031916
Protein Refseq	NP_114122
MIM	611756
UniProt ID	Q96C74

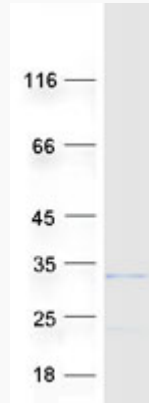
 Tel: 1-631-559-9269 1-516-512-3133

 Email: info@creative-biomart.com  Fax: 1-631-938-8127

 45-1 Ramsey Road, Shirley, NY 11967, USA



SDS-PAGE



Tel: 1-631-559-9269 1-516-512-3133

Email: info@creative-biomart.com Fax: 1-631-938-8127

45-1 Ramsey Road, Shirley, NY 11967, USA