

Recombinant Human/Cynomolgus/Rhesus macaque ROR1 protein, His-Avi-tagged, Biotinylated

Cat. No. ROR1-1810H Lot. No. (See product label)

SPECIFICATION

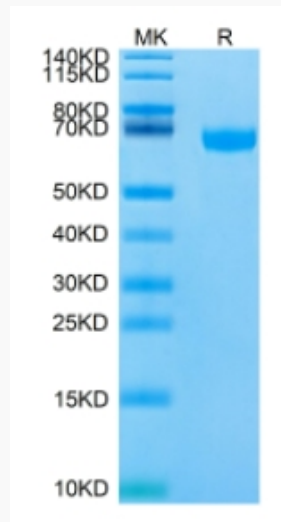
Product Overview	Biotinylated Recombinant Human/Cynomolgus/Rhesus macaque ROR1 protein(Q01973-1)(Gln30-Glu403), fused with C-terminal His and Avi tag, was expressed in HEK293.
Species	Human/Cynomolgus/Rhesus macaque
Source	HEK293
ProteinLength	Gln30-Glu403
Tag	C-His-Avi
Conjugation/Label	Biotin
Form	Lyophilized from 0.22µm filtered solution in PBS (pH 7.4). Normally 5% trehalose is added as protectant before lyophilization.
Bio-activity	Immobilized Biotinylated Human/Cynomolgus/Rhesus macaque ROR1, His Tag at 1ug/ml (100ul/well) on the streptavidin precoated plate (5ug/ml). Dose response curve for Anti-ROR1 Antibody, hFc Tag with the EC50 of 2.1ng/ml determined by ELISA.
Molecular Mass	The protein has a predicted MW of 44.9 kDa. Due to glycosylation, the protein migrates to 55-70 kDa based on Tris-Bis PAGE result.

 Tel: 1-631-559-9269 1-516-512-3133

 Email: info@creative-biomart.com  Fax: 1-631-938-8127

 45-1 Ramsey Road, Shirley, NY 11967, USA

Endotoxin	Less than 1EU per µg by the LAL method.
Purity	> 95% as determined by Tris-Bis PAGE;> 95% as determined by HPLC
Storage	Reconstituted protein stable at -80°C for 12 months, 4°C for 1 week. Use a manual defrost freezer and avoid repeated freeze-thaw cycles.
Reconstitution	Centrifuge tubes before opening. Reconstituting to a concentration more than 100 µg/ml is recommended. Dissolve the lyophilized protein in distilled water.
Conjugation	Biotin

Tris-Bis PAGE


 Tel: 1-631-559-9269 1-516-512-3133

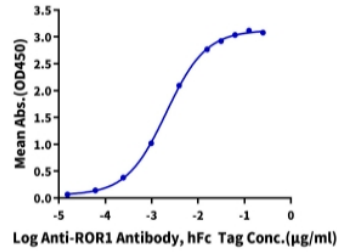
 Email: info@creative-biomart.com  Fax: 1-631-938-8127

 45-1 Ramsey Road, Shirley, NY 11967, USA



ELISA Data

Biotinylated Human/Cynomolgus/Rhesus macaque ROR1, His Tag ELISA
0.1 µg Biotinylated Human/Cynomolgus/Rhesus macaque ROR1, His Tag Per Well



Tel: 1-631-559-9269 1-516-512-3133

Email: info@creative-biomart.com Fax: 1-631-938-8127

45-1 Ramsey Road, Shirley, NY 11967, USA