

Recombinant Human ROR1 protein, His-tagged

Cat. No. ROR1-1813H Lot. No. (See product label)

SPECIFICATION

Product Overview	Human ROR1 (165-305, Frizzled domain), His Tag is expressed from human 293 cells (HEK293). It contains AA Glu 165 - Asp 305 (Accession # Q01973).
Species	Human
Source	HEK293
ProteinLength	AA Glu 165 - Asp 305
Description	<p>Tyrosine-protein kinase transmembrane receptor ROR1 is also known as Neurotrophic tyrosine kinase, receptor-related 1 (NTRKR1), which belongs to the protein kinase superfamily or tyr protein kinase family or ROR subfamily. ROR1 contains 1 FZ (frizzled) domain, 1 Ig-like C2-type (immunoglobulin-like) domain, 1 kringle domain, 1 protein kinase domain. ROR1 is expressed at high levels during early embryonic development. The expression levels drop strongly around day 16 and there are only very low levels in adult tissues. Isoform Short is strongly expressed in fetal and adult CNS and in a variety of human cancers, including those originating from CNS or PNS neuroectoderm. ROR1 could interact with casein kinase 1 epsilon (CK1ε) to activate phosphoinositide 3-kinase-mediated AKT phosphorylation and cAMP-response-element-binding protein (CREB), which was associated with enhanced tumor-cell growth.</p>
Predicted N Terminal	Glu 165
Form	Lyophilized from 0.22

 Tel: 1-631-559-9269 1-516-512-3133

 Email: info@creative-biomart.com  Fax: 1-631-938-8127

 45-1 Ramsey Road, Shirley, NY 11967, USA

µm filtered solution in PBS, pH7.4, 10% trehalose.

Molecular Mass

This protein carries a polyhistidine tag at the C-terminus. The protein has a calculated MW of 16.7 kDa. The protein migrates as 21 kDa on a SDS-PAGE gel under reducing (R) condition due to glycosylation.

Endotoxin

Less than 1.0 EU per µg by the LAL method.

Purity

>95% as determined by SDS-PAGE.

Storage

For long term storage, the product should be stored at lyophilized state at -20°C or lower. Please avoid repeated freeze-thaw cycles. No activity loss is observed after storage at: 4-8°C for 12 months in lyophilized state; -70°C for 3 months under sterile conditions after reconstitution.

Reconstitution

It is recommended that sterile water be added to the vial to prepare a stock solution of 0.2 ug/ul. Centrifuge the vial at 4°C before opening to recover the entire contents.

GENE INFORMATION

Gene Name

ROR1 receptor tyrosine kinase like orphan receptor 1 [Homo sapiens (human)]

Official Symbol

ROR1

Synonyms

NTRKR1; dJ537F10.1; neurotrophic tyrosine kinase; receptor-related 1

Gene ID

4919

mRNA Refseq

NM_001083592.1

Protein Refseq

NP_001077061.1

 Tel: 1-631-559-9269 1-516-512-3133

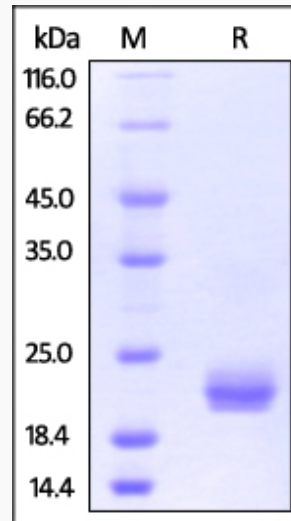
 Email: info@creative-biomart.com  Fax: 1-631-938-8127

 45-1 Ramsey Road, Shirley, NY 11967, USA

UniProt ID

Q01973

SDS-PAGE



Human ROR1 (165-305, Frizzled domain), His Tag on SDS-PAGE under reducing (R) condition. The gel was stained overnight with Coomassie Blue. The purity of the protein is greater than 95%.

 Tel: 1-631-559-9269 1-516-512-3133

 Email: info@creative-biomart.com  Fax: 1-631-938-8127

 45-1 Ramsey Road, Shirley, NY 11967, USA