

Recombinant Human ROR1 protein, His-tagged

Cat. No. ROR1-1814H Lot. No. (See product label)

SPECIFICATION

Product Overview Human ROR1 (308-395, Kringle domain) Protein (Human ROR1 (308-395, Kringle domain), His Tag) Asn 308 - Asp 395 (Accession # Q01973) was produced in human 293 cells (HEK293).

Species Human

Source HEK293

ProteinLength AA Asn 308 - Asp 395

Description Tyrosine-protein kinase transmembrane receptor ROR1 is also known as Neurotrophic tyrosine kinase, receptor-related 1 (NTRKR1), which belongs to the protein kinase superfamily or tyr protein kinase family or ROR subfamily. ROR1 contains 1 FZ (frizzled) domain, 1 Ig-like C2-type (immunoglobulin-like) domain, 1 kringle domain, 1 protein kinase domain. ROR1 is expressed at high levels during early embryonic development. The expression levels drop strongly around day 16 and there are only very low levels in adult tissues. Isoform Short is strongly expressed in fetal and adult CNS and in a variety of human cancers, including those originating from CNS or PNS neuroectoderm. ROR1 could interact with casein kinase 1 epsilon (CK1ε) to activate phosphoinositide 3-kinase-mediated AKT phosphorylation and cAMP-response-element-binding protein (CREB), which was associated with enhanced tumor-cell growth.

Predicted N Terminal Asn 308

 Tel: 1-631-559-9269 1-516-512-3133

 Email: info@creative-biomart.com  Fax: 1-631-938-8127

 45-1 Ramsey Road, Shirley, NY 11967, USA

Form	Lyophilized from 0.22 µm filtered solution in PBS, pH7.4, 10% trehalose.
Molecular Mass	Human ROR1 (308-395, Kringle domain), His Tag is fused with a polyhistidine tag at the C-terminus, and has a calculated MW of 10.8 kDa. The reducing (R) protein migrates as 20 kDa in SDS-PAGE due to glycosylation.
Endotoxin	Less than 1.0 EU per µg of the Human ROR1 (308-395, Kringle domain), His Tag by the LAL method.
Purity	>95% as determined by SDS-PAGE.
Storage	Avoid repeated freeze-thaw cycles. No activity loss was observed after storage at: In lyophilized state for 1 year (4°C); After reconstitution under sterile conditions for 3 months (-70°C).
Reconstitution	It is recommended that sterile water be added to the vial to prepare a stock solution of 0.2 ug/ul. Centrifuge the vial at 4°C before opening to recover the entire contents.

GENE INFORMATION

Gene Name	ROR1 receptor tyrosine kinase like orphan receptor 1 [Homo sapiens (human)]
Official Symbol	ROR1
Synonyms	NTRKR1; dJ537F10.1; neurotrophic tyrosine kinase; receptor-related 1
Gene ID	4919
mRNA Refseq	NM_001083592.1
Protein Refseq	NP_001077061.1

 Tel: 1-631-559-9269 1-516-512-3133

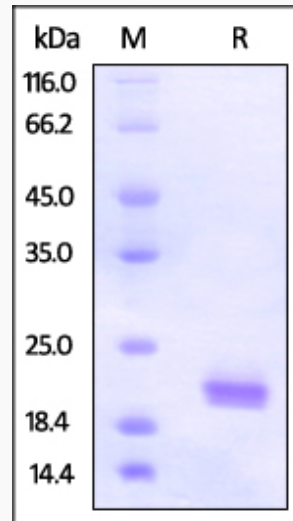
 Email: info@creative-biomart.com  Fax: 1-631-938-8127

 45-1 Ramsey Road, Shirley, NY 11967, USA

UniProt ID

Q01973

SDS-PAGE



The purity of Human ROR1 (308-395, Kringle domain), His Tag was determined by SDS-PAGE under reducing (R) condition and staining overnight with Coomassie Blue.

Tel: 1-631-559-9269 1-516-512-3133

Email: info@creative-biomart.com Fax: 1-631-938-8127

45-1 Ramsey Road, Shirley, NY 11967, USA