

## Recombinant Human ROR1 protein, Fc-tagged

Cat. No. ROR1-1815H Lot. No. (See product label)

### SPECIFICATION

<b>Product Overview</b>	Human ROR1, Fc Tag is expressed from human 293 cells (HEK293). It contains AA Gln 30 - Glu 403 (Accession # AAA60275.1).
<b>Species</b>	Human
<b>Source</b>	HEK293
<b>ProteinLength</b>	AA Gln 30 - Glu 403
<b>Description</b>	<p>Tyrosine-protein kinase transmembrane receptor ROR1 is also known as Neurotrophic tyrosine kinase, receptor-related 1 (NTRKR1), which belongs to the protein kinase superfamily or tyr protein kinase family or ROR subfamily. ROR1 contains 1 FZ (frizzled) domain, 1 Ig-like C2-type (immunoglobulin-like) domain, 1 kringle domain, 1 protein kinase domain. ROR1 is expressed at high levels during early embryonic development. The expression levels drop strongly around day 16 and there are only very low levels in adult tissues. Isoform Short is strongly expressed in fetal and adult CNS and in a variety of human cancers, including those originating from CNS or PNS neuroectoderm. ROR1 could interact with casein kinase 1 epsilon (CK1ε) to activate phosphoinositide 3-kinase-mediated AKT phosphorylation and cAMP-response-element-binding protein (CREB), which was associated with enhanced tumor-cell growth.</p>
<b>Predicted N Terminal</b>	Gln 30
<b>Form</b>	Lyophilized from 0.22

 Tel: 1-631-559-9269 1-516-512-3133

 Email: [info@creative-biomart.com](mailto:info@creative-biomart.com)  Fax: 1-631-938-8127

 45-1 Ramsey Road, Shirley, NY 11967, USA

µm filtered solution in 50 mM tris, 100 mM glycine, pH7.5, 10% trehalose.

**Molecular Mass**

This protein carries a human IgG1 Fc tag at the C-terminus. The protein has a calculated MW of 68.6 kDa. The protein migrates as 70-90 kDa under reducing (R) condition (SDS-PAGE) due to glycosylation.

**Endotoxin**

Less than 1.0 EU per µg by the LAL method.

**Purity**

>95% as determined by SDS-PAGE.

**Storage**

For long term storage, the product should be stored at lyophilized state at -20°C or lower. Please avoid repeated freeze-thaw cycles. No activity loss is observed after storage at: 4-8°C for 12 months in lyophilized state; -70°C for 3 months under sterile conditions after reconstitution.

**Reconstitution**

It is recommended that sterile water be added to the vial to prepare a stock solution of 0.2 ug/ul. Centrifuge the vial at 4°C before opening to recover the entire contents.

## GENE INFORMATION

**Gene Name**

ROR1 receptor tyrosine kinase like orphan receptor 1 [ Homo sapiens (human) ]

**Official Symbol**

ROR1

**Synonyms**

NTRKR1; dJ537F10.1; neurotrophic tyrosine kinase; receptor-related 1

**Gene ID**

4919

**mRNA Refseq**

NM\_001083592.1

**Protein Refseq**

NP\_001077061.1

 Tel: 1-631-559-9269 1-516-512-3133

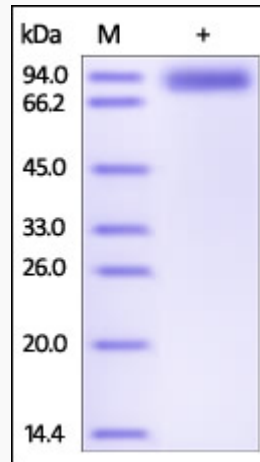
 Email: [info@creative-biomart.com](mailto:info@creative-biomart.com)  Fax: 1-631-938-8127

 45-1 Ramsey Road, Shirley, NY 11967, USA

UniProt ID

Q01973

SDS-PAGE



Human ROR1, Fc Tag on SDS-PAGE under reducing (R) condition. The gel was stained overnight with Coomassie Blue. The purity of the protein is greater than 95%.

Tel: 1-631-559-9269 1-516-512-3133

Email: [info@creative-biomart.com](mailto:info@creative-biomart.com) Fax: 1-631-938-8127

45-1 Ramsey Road, Shirley, NY 11967, USA