

# Recombinant Human/Cynomolgus/Rhesus macaque ROR1 protein, His-Avi-tagged

Cat. No. ROR1-182H Lot. No. (See product label)

## SPECIFICATION

|                         |   |
|-------------------------|---|
| <b>Product Overview</b> | Recombinant Human/Cynomolgus/Rhesus macaque ROR1 protein(Q01973-1)(Gln30-Glu403), fused with C-terminal His and Avi tag, was expressed in HEK293.   |
| <b>Species</b>          | Human/Cynomolgus/Rhesus macaque   |
| <b>Source</b>           | HEK293  |
| <b>ProteinLength</b>    | Gln30-Glu403  |
| <b>Tag</b>              | C-His-Avi   |
| <b>Form</b>             | Lyophilized from 0.22µm filtered solution in PBS (pH 7.4). Normally 5% trehalose is added as protectant before lyophilization.  |
| <b>Bio-activity</b>     | Immobilized Human/Cynomolgus/Rhesus macaque ROR1, His Tag at 1µg/ml (100µl/Well) on the plate. Dose response curve for Anti-ROR1 Antibody, hFc Tag with the EC50 of 1.4ng/ml determined by ELISA. |
| <b>Molecular Mass</b>   | The protein has a predicted MW of 44.9 kDa. Due to glycosylation, the protein migrates to 55-70 kDa based on Tris-Bis PAGE result.  |
| <b>Endotoxin</b>        | Less than 1EU per µg by the LAL method.   |
| <b>Purity</b>           | > 95% as determined by Tris-Bis PAGE; > 95% as determined by HPLC   |

 Tel: 1-631-559-9269 1-516-512-3133

 Email: [info@creative-biomart.com](mailto:info@creative-biomart.com)  Fax: 1-631-938-8127

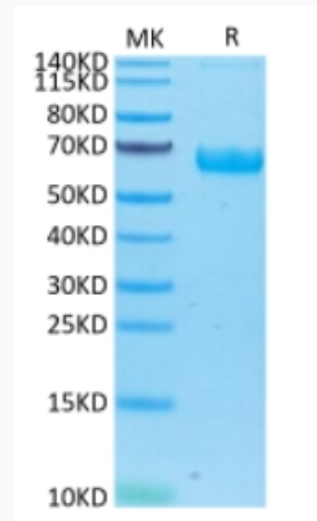
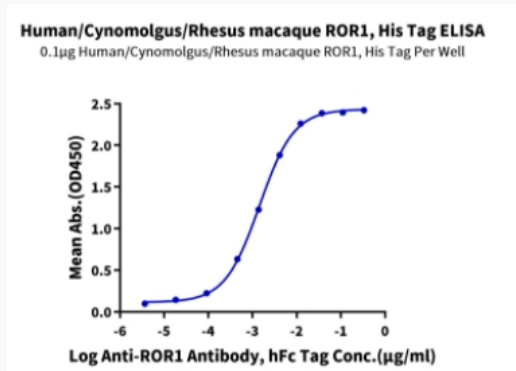
 45-1 Ramsey Road, Shirley, NY 11967, USA

**Storage**

Reconstituted protein stable at -80°C for 12 months, 4°C for 1 week. Use a manual defrost freezer and avoid repeated freeze-thaw cycles.

**Reconstitution**

Centrifuge tubes before opening. Reconstituting to a concentration more than 100 µg/ml is recommended. Dissolve the lyophilized protein in distilled water.

**Tris-Bis PAGE**

**ELISA Data**


Tel: 1-631-559-9269 1-516-512-3133

Email: [info@creative-biomart.com](mailto:info@creative-biomart.com) Fax: 1-631-938-8127

45-1 Ramsey Road, Shirley, NY 11967, USA