

Recombinant Human ROR1 Protein (Gln30-Tyr406), C-His tagged

Cat. No. ROR1-5876H Lot. No. (See product label)

SPECIFICATION

| | |
|-------------------------|---|
| Product Overview | Recombinant human ROR1 (Gln30-Tyr406) fused with the C-His tag was expressed in mammalian cells. |
| Species | Human |
| Source | Mammalian Cells |
| ProteinLength | Gln30-Tyr406 |
| Form | Lyophilized powder/frozen liquid |
| Molecular Mass | 45.69 kDa |
| Purity | > 90 % as determined by SDS-PAGE |
| Notes | For research use only. |
| Storage | Use a manual defrost freezer and avoid repeated freeze thaw cycles. Store at 2 to 8 centigrade for one week. Store at -20 to -80 centigrade for twelve months from the date of receipt. |
| Storage Buffer | Supplied as solution form in PBS, pH 7.5 or lyophilized from PBS, pH 7.5. |
| Reconstitution | Reconstitute in sterile water for a stock solution. |

 Tel: 1-631-559-9269 1-516-512-3133

 Email: info@creative-biomart.com  Fax: 1-631-938-8127

 45-1 Ramsey Road, Shirley, NY 11967, USA

Shipping They are shipped out with dry ice/blue ice unless customers require otherwise.

GENE INFORMATION

Gene Name ROR1 receptor tyrosine kinase-like orphan receptor 1 [Homo sapiens (human)]

Official Symbol ROR1

Synonyms ROR1; receptor tyrosine kinase-like orphan receptor 1; NTRKR1; tyrosine-protein kinase transmembrane receptor ROR1; neurotrophic tyrosine kinase receptor-related 1; neurotrophic tyrosine kinase, receptor-related 1; dJ537F10.1; MGC99659;

Gene ID 4919

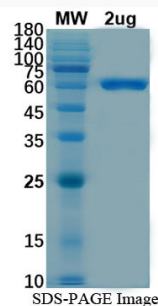
mRNA Refseq NM_001083592

Protein Refseq NP_001077061

MIM 602336

UniProt ID Q01973

SDS-PAGE



Tel: 1-631-559-9269 1-516-512-3133

Email: info@creative-biomart.com Fax: 1-631-938-8127

45-1 Ramsey Road, Shirley, NY 11967, USA