

Recombinant Human ROR1 protein, His-Avi-tagged

Cat. No. ROR1-973H Lot. No. (See product label)

SPECIFICATION

Product Overview	Recombinant Human ROR1 Protein is expressed from mammalian with a His Tag and Avi Tag at the C-terminal. It contains Met1-Glu403.
Species	Human
Source	HEK293
ProteinLength	Met1-Glu403
Description	ROR1 (Receptor tyrosine kinase-like orphan receptor 1), also known as neurotrophic tyrosine kinase receptor-related 1 (NTRKR1), is a member of the ROR family within receptor tyrosine kinases (RTK) superfamily. Two ROR family members (ROR1 and ROR2) have been identified and are characterized by the intracellular tyrosine kinase domains, highly related to those of the Trk-family receptor tyrosine kinases, and by the extracellular Frizzled-like cysteine-rich domains and kringle domains, which are common to receptors of the Wnt family members.
Form	Supplied as 0.22um filtered solution in PBS (pH 7.4).
Molecular Mass	The protein has a predicted MW of 44.9 kDa. Due to glycosylation, the protein migrates to 55-70KDa based on Bis-Tris PAGE result.
Endotoxin	Less than 0.05 EU per ug by the LAL method.
Purity	> 95% as determined by Bis-Tris PAGE; > 95% as determined by HPLC

 Tel: 1-631-559-9269 1-516-512-3133

 Email: info@creative-biomart.com  Fax: 1-631-938-8127

 45-1 Ramsey Road, Shirley, NY 11967, USA

Storage The product should be stored at -70°C. Please do not repeated freeze-thaw cycles.

Reconstitution It is recommended that sterile water be added to the vial to prepare a stock solution of 0.2 ug/ul. Centrifuge the vial at 4°C before opening to recover the entire contents.

GENE INFORMATION

Gene Name [ROR1 receptor tyrosine kinase-like orphan receptor 1 \[Homo sapiens \]](#)

Official Symbol [ROR1](#)

Synonyms EC 2. 7. 10. 1; MGC99659; neurotrophic tyrosine kinase receptor-related 1; Neurotrophic tyrosine kinase, receptor-related 1; NTRKR1; NTRKR1dJ537F10. 1; receptor tyrosine kinase-like orphan receptor 1; ROR1; tyrosine-protein kinase transmembrane receptor ROR1

Gene ID [4919](#)

mRNA Refseq [NM_001083592. 2](#)

Protein Refseq [NP_001077061. 1](#)

MIM [602336](#)

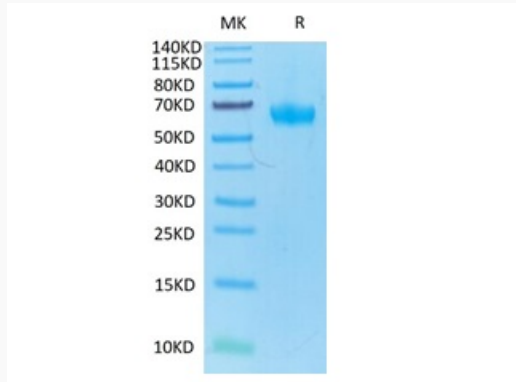
UniProt ID [Q01973](#)

 Tel: 1-631-559-9269 1-516-512-3133

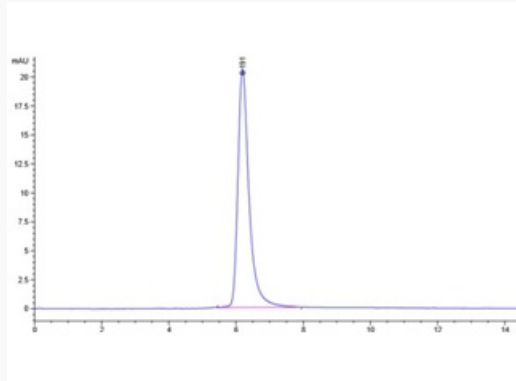
 Email: info@creative-biomart.com  Fax: 1-631-938-8127

 45-1 Ramsey Road, Shirley, NY 11967, USA

Tris-Bis PAGE



HPLC data



 Tel: 1-631-559-9269 1-516-512-3133

 Email: info@creative-biomart.com  Fax: 1-631-938-8127

 45-1 Ramsey Road, Shirley, NY 11967, USA