

# Whole Blood ROR1 Antibody-coupled magnetic MicroBeads

Cat. No. ROR1-9875M Lot. No. (See product label)

## SPECIFICATION

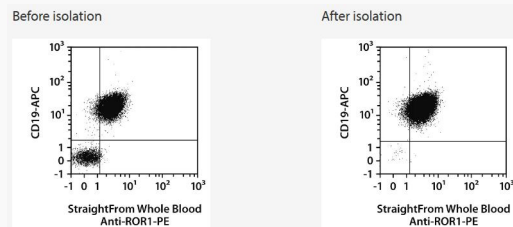
**Species** Human

**Capacity** for 40 mL whole blood

### Background

The StraightFrom Whole Blood Anti-ROR1 MicroBead Kit has been developed for the positive selection of ROR1+ cells directly from anticoagulated whole blood by using the autoMACS Pro Separator or the Whole Blood Column Kit. No sample preparation is required, including density gradient centrifugation or erythrocyte lysis. ROR1 has characteristics of an oncofetal gene and was recently identified to be overexpressed at the gene and protein levels in chronic lymphocytic leukemia (CLL). ROR1 expression has also been detected in ovarian cancer, renal cancer, melanoma, and lung adenocarcinoma, suggesting a general role of ROR1 in cancer genesis and/or maintenance. Moreover, to a much lower level ROR1 expression has been found in undifferentiated embryonic stem cells, in adipose tissue, in early stage of B cell development, but not in major adult tissues. In blood samples with low frequencies of CLL B cells, e.g., in minimal residual disease, the enrichment of these cells via the StraightFrom Whole Blood Anti-ROR1 MicroBead Kit allows analysis and downstream processing of these cells.

### Analysis



Tel: 1-631-559-9269 1-516-512-3133

Email: [info@creative-biomart.com](mailto:info@creative-biomart.com) Fax: 1-631-938-8127

45-1 Ramsey Road, Shirley, NY 11967, USA



Separation of a B-CLL whole blood sample using the StraightFrom Whole Blood Anti-ROR1 MicroBead Kit and the autoMACS Pro Separator. Cells were fluorescently stained with CD19-APC and analyzed by flow cytometry using the MACSQuant Analyzer. Cell debris and dead cells were excluded from the analysis based on scatter signals and propidium iodide fluorescence.

 Tel: 1-631-559-9269 1-516-512-3133

 Email: [info@creative-biomart.com](mailto:info@creative-biomart.com)  Fax: 1-631-938-8127

 45-1 Ramsey Road, Shirley, NY 11967, USA