

Recombinant Human ROR2 protein, His-Avi-tagged, Biotinylated

Cat. No. ROR2-0651H **Lot. No.** (See product label)

SPECIFICATION

Product Overview	Biotinylated Recombinant Human ROR2 protein(A1L4F5)(Val34-Gly403), fused with C-terminal His and Avi tag, was expressed in HEK293.
Species	Human
Source	HEK293
ProteinLength	Val34-Gly403
Tag	C-His-Avi
Conjugation/Label	Biotin
Form	Lyophilized from 0.22µm filtered solution in PBS (pH 7.4). Normally 5% trehalose is added as protectant before lyophilization.
Bio-activity	Immobilized Anti-ROR2 Antibody, hFc Tag at 1ug/ml (100ul/well) on the plate. Dose response curve for Biotinylated Human ROR2, hFc Tag with the EC50 of 7.8ng/ml determined by ELISA.
Molecular Mass	The protein has a predicted MW of 44.2 kDa. Due to glycosylation, the protein migrates to 54-65 kDa based on Tris-Bis PAGE result.
Endotoxin	Less than 1EU per µg by the LAL method.

 Tel: 1-631-559-9269 1-516-512-3133

 Email: info@creative-biomart.com  Fax: 1-631-938-8127

 45-1 Ramsey Road, Shirley, NY 11967, USA

Purity	> 95% as determined by Tris-Bis PAGE;> 95% as determined by HPLC
Storage	Reconstituted protein stable at -80°C for 12 months, 4°C for 1 week. Use a manual defrost freezer and avoid repeated freeze-thaw cycles.
Reconstitution	Centrifuge tubes before opening. Reconstituting to a concentration more than 100 µg/ml is recommended. Dissolve the lyophilized protein in distilled water.
Conjugation	Biotin

GENE INFORMATION

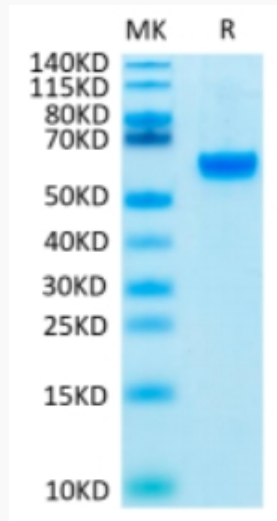
Gene Name	ROR2 receptor tyrosine kinase-like orphan receptor 2 [Homo sapiens]
Official Symbol	ROR2
Synonyms	ROR2; receptor tyrosine kinase-like orphan receptor 2; BDB, BDB1, NTRKR2; tyrosine-protein kinase transmembrane receptor ROR2; neurotrophic tyrosine kinase receptor-related 2; BDB; BDB1; NTRKR2; MGC163394;
Gene ID	4920
mRNA Refseq	NM_004560
Protein Refseq	NP_004551
MIM	602337
UniProt ID	Q01974

 Tel: 1-631-559-9269 1-516-512-3133

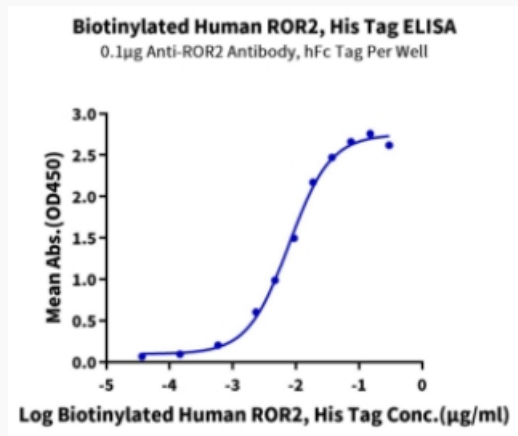
 Email: info@creative-biomart.com  Fax: 1-631-938-8127

 45-1 Ramsey Road, Shirley, NY 11967, USA

Tris-Bis PAGE



ELISA Data



 Tel: 1-631-559-9269 1-516-512-3133

 Email: info@creative-biomart.com  Fax: 1-631-938-8127

 45-1 Ramsey Road, Shirley, NY 11967, USA