

Recombinant Full Length Human ROR2 Protein, C-Flag-tagged

Cat. No. ROR2-1130HFL **Lot. No.** (See product label)

SPECIFICATION

Product Overview	Recombinant Full Length Human ROR2 Protein, fused to Flag-tag at C-terminus, was expressed in Mammalian cells.
Species	Human
Source	Mammalian Cells
Description	The protein encoded by this gene is a receptor protein tyrosine kinase and type I transmembrane protein that belongs to the ROR subfamily of cell surface receptors. The protein may be involved in the early formation of the chondrocytes and may be required for cartilage and growth plate development. Mutations in this gene can cause brachydactyly type B, a skeletal disorder characterized by hypoplasia/aplasia of distal phalanges and nails. In addition, mutations in this gene can cause the autosomal recessive form of Robinow syndrome, which is characterized by skeletal dysplasia with generalized limb bone shortening, segmental defects of the spine, brachydactyly, and a dysmorphic facial appearance.
Form	25 mM Tris HCl, pH 7.3, 100 mM glycine, 10% glycerol.
Molecular Mass	101.3 kDa
AA Sequence	MARGSALPRRPLLCIPAVWAAAALLLSVSRTSGEVEVLDPNDPLGPLDGQDGIPTL KGYFLNFLEPVNN ITIVQGQTAILHCKVAGNPPPNVRWLKNDAPVVQEPRIIRKTE YGSRLRIQDLDTTDTGYQCVATNG MKTITATGVLFVRLGPTHSPNHNHFQDDYHED GFCQPYRGIACARFIGNRTIYVDSLQMQGEIENRITAAF TMIGTSTHLSDQCSQFAIP

 Tel: 1-631-559-9269 1-516-512-3133

 Email: info@creative-biomart.com  Fax: 1-631-938-8127

 45-1 Ramsey Road, Shirley, NY 11967, USA

SFCHFVFPLCDARSRAPKPRELCRDECEVLES DLCRQEYTIARSNPLILMR LQLPKC
 EALPMPEPDAANCMRIGIPAERLGRYHQCYNGSGMDYRGTASTTKSGHQCPWA
 LQHPHSHHL SSTDFPELGGGHAYCRNPGGQMEGPWCFTQKNKVRMELCDVPSC
 SPRDSSKMGILYILVPSIAIPLVIAC LFFLVCMCRNKQKASASTPQRRQLMASPSQDM
 EMPLINQHKQAKLKEISLSAVRFMEELGEDRFGKVYKG HLFGPAPGEQTQAVAIKTL
 KDKAEGPLREEFRHEAMLRARLQHPNVVCLLGVVTKDQPLSMIFSYSYCSHGD LHEFL
 VMRSPHSDVGSTDDDRTVKSALEPPDFVHLVAQIAAGMEYLSSHVVHKDLATRN
 LVYDKLNVK ISDLGLFREYVAADYYKLLGNSLLPIRWMAPEAIMYGKFSIDSDIWSYG
 VVLWEVFSYGLQPYCGYSNQD VVEMIRNRQVLPCPDDCPAWVYALMIECWNEFPS
 RRPRFKDIHSRLRAWGNLSNYNSSAQTSGASNTTQT SSLSTSPVSNVSNARYVGP
 KQKAPFPQPQFIPMKGQIRPMVPPPQLYIPVNGYQVPAYGAYLPNFYPV QIPMQ
 MAPQQVPPQMVPKPSHHSGSGSTSTGYVTTAPSNTSMADRAALLSEGADDTQNA
 PEDGAQSTVQ
 EAEEEEEGSVPETELLGDCDTLQVDEAQVQLEATRTRPLEQKLISEEDLAANDILDYK
 DDDDKV

Purity > 80% as determined by SDS-PAGE and Coomassie blue staining.

Stability Stable for 12 months from the date of receipt of the product under proper storage and handling conditions. Avoid repeated freeze-thaw cycles.

Storage Store at -80 centigrade.

Concentration >50 ug/mL as determined by microplate BCA method.

Preparation Recombinant protein was captured through anti-DDK affinity column followed by conventional chromatography steps.

Protein Families Druggable Genome, Protein Kinase, Transmembrane

 Tel: 1-631-559-9269 1-516-512-3133

 Email: info@creative-biomart.com  Fax: 1-631-938-8127

 45-1 Ramsey Road, Shirley, NY 11967, USA

Full Length Full L.

GENE INFORMATION

Gene Name ROR2 receptor tyrosine kinase like orphan receptor 2 [Homo sapiens (human)]

Official Symbol ROR2

Synonyms BDB; BDB1; NTRKR2

Gene ID 4920

mRNA Refseq NM_004560.4

Protein Refseq NP_004551.2

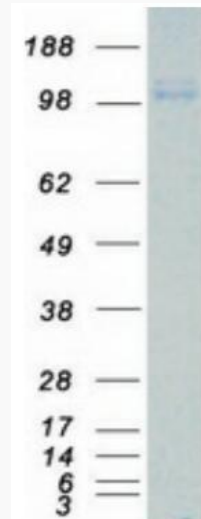
MIM 602337

UniProt ID Q01974

 Tel: 1-631-559-9269 1-516-512-3133

 Email: info@creative-biomart.com  Fax: 1-631-938-8127

 45-1 Ramsey Road, Shirley, NY 11967, USA



Coomassie blue staining of purified ROR2 protein.

 Tel: 1-631-559-9269 1-516-512-3133

 Email: info@creative-biomart.com  Fax: 1-631-938-8127

 45-1 Ramsey Road, Shirley, NY 11967, USA