

Recombinant Human ROR2 protein, His-Avi-tagged

Cat. No. ROR2-145H Lot. No. (See product label)

SPECIFICATION

Product Overview	Recombinant Human ROR2 protein(A1L4F5)(Val34-Gly403), fused with C-terminal His and Avi tag, was expressed in HEK293.
Species	Human
Source	HEK293
ProteinLength	Val34-Gly403
Tag	C-His-Avi
Form	Lyophilized from 0.22µm filtered solution in PBS (pH 7.4). Normally 5% trehalose is added as protectant before lyophilization.
Bio-activity	Immobilized Human ROR2, His Tag at 1µg/ml (100µl/well) on the plate. Dose response curve for Anti-ROR2 Antibody, hFc Tag with the EC50 of 4.1ng/ml determined by ELISA.
Molecular Mass	The protein has a predicted MW of 44.2 kDa. Due to glycosylation, the protein migrates to 54-58 kDa based on Tris-Bis PAGE result.
Endotoxin	Less than 1EU per µg by the LAL method.
Purity	> 95% as determined by Tris-Bis PAGE; > 95% as determined by HPLC

 Tel: 1-631-559-9269 1-516-512-3133

 Email: info@creative-biomart.com  Fax: 1-631-938-8127

 45-1 Ramsey Road, Shirley, NY 11967, USA

Storage Reconstituted protein stable at -80°C for 12 months, 4°C for 1 week. Use a manual defrost freezer and avoid repeated freeze-thaw cycles.

Reconstitution Centrifuge tubes before opening. Reconstituting to a concentration more than 100 µg/ml is recommended. Dissolve the lyophilized protein in distilled water.

GENE INFORMATION

Gene Name [ROR2 receptor tyrosine kinase-like orphan receptor 2 \[Homo sapiens \]](#)

Official Symbol [ROR2](#)

Synonyms ROR2; receptor tyrosine kinase-like orphan receptor 2; BDB, BDB1, NTRKR2; tyrosine-protein kinase transmembrane receptor ROR2; neurotrophic tyrosine kinase receptor-related 2; BDB; BDB1; NTRKR2; MGC163394;

Gene ID [4920](#)

mRNA Refseq [NM_004560](#)

Protein Refseq [NP_004551](#)

MIM [602337](#)

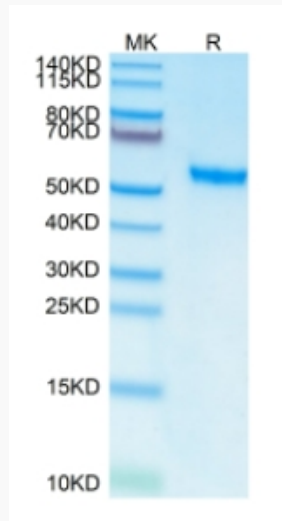
UniProt ID [Q01974](#)

 Tel: 1-631-559-9269 1-516-512-3133

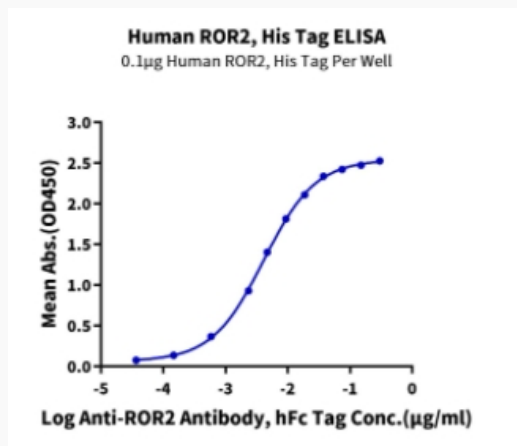
 Email: info@creative-biomart.com  Fax: 1-631-938-8127

 45-1 Ramsey Road, Shirley, NY 11967, USA

Tris-Bis PAGE



ELISA Data



 Tel: 1-631-559-9269 1-516-512-3133

 Email: info@creative-biomart.com  Fax: 1-631-938-8127

 45-1 Ramsey Road, Shirley, NY 11967, USA