

## Recombinant Human ROR2 protein, hFc-tagged

Cat. No. ROR2-183H Lot. No. (See product label)

### SPECIFICATION

<b>Product Overview</b>	Recombinant Human ROR2 protein(A1L4F5)(Val34-Gly403), fused with C-terminal hFc tag, was expressed in HEK293.
<b>Species</b>	Human
<b>Source</b>	HEK293
<b>ProteinLength</b>	Val34-Gly403
<b>Tag</b>	C-hFc
<b>Form</b>	Lyophilized from 0.22µm filtered solution in PBS (pH 7.4). Normally 8% trehalose is added as protectant before lyophilization.
<b>Bio-activity</b>	Immobilized Human ROR2, hFc Tag at 1ug/ml (100ul/well) on the plate. Dose response curve for Biotinylated Anti-ROR2 Antibody, hFc Tag with the EC50 of 20.9ng/ml determined by ELISA.
<b>Molecular Mass</b>	The protein has a predicted MW of 68 kDa. Due to glycosylation, the protein migrates to 80-110 kDa based on Tris-Bis PAGE result.
<b>Endotoxin</b>	Less than 1EU per µg by the LAL method.
<b>Purity</b>	> 95% as determined by Tris-Bis PAGE;> 95% as determined by HPLC

 Tel: 1-631-559-9269 1-516-512-3133

 Email: [info@creative-biomart.com](mailto:info@creative-biomart.com)  Fax: 1-631-938-8127

 45-1 Ramsey Road, Shirley, NY 11967, USA

**Storage** Reconstituted protein stable at -80°C for 12 months, 4°C for 1 week. Use a manual defrost freezer and avoid repeated freeze-thaw cycles.

**Reconstitution** Centrifuge tubes before opening. Reconstituting to a concentration more than 100 µg/ml is recommended. Dissolve the lyophilized protein in distilled water.

## GENE INFORMATION

**Gene Name** [ROR2 receptor tyrosine kinase-like orphan receptor 2 \[ Homo sapiens \]](#)

**Official Symbol** [ROR2](#)

**Synonyms** ROR2; receptor tyrosine kinase-like orphan receptor 2; BDB, BDB1, NTRKR2; tyrosine-protein kinase transmembrane receptor ROR2; neurotrophic tyrosine kinase receptor-related 2; BDB; BDB1; NTRKR2; MGC163394;

**Gene ID** [4920](#)

**mRNA Refseq** [NM\\_004560](#)

**Protein Refseq** [NP\\_004551](#)

**MIM** [602337](#)

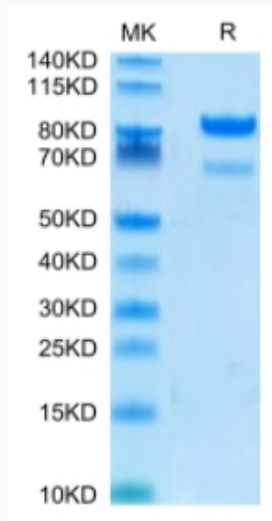
**UniProt ID** [Q01974](#)

 Tel: 1-631-559-9269 1-516-512-3133

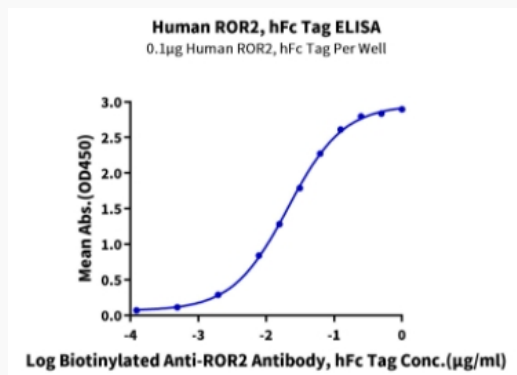
 Email: [info@creative-biomart.com](mailto:info@creative-biomart.com)  Fax: 1-631-938-8127

 45-1 Ramsey Road, Shirley, NY 11967, USA

**Tris-Bis PAGE**



**ELISA Data**



 Tel: 1-631-559-9269 1-516-512-3133

 Email: [info@creative-biomart.com](mailto:info@creative-biomart.com)  Fax: 1-631-938-8127

 45-1 Ramsey Road, Shirley, NY 11967, USA