

## Recombinant Human ROR2 Protein (Glu34-Tyr406), C-His tagged

Cat. No. ROR2-5879H Lot. No. (See product label)

### SPECIFICATION

<b>Product Overview</b>	Recombinant human ROR2 (Glu34-Tyr406) fused with the C-His tag was expressed in mammalian cells.
<b>Species</b>	Human
<b>Source</b>	Mammalian Cells
<b>ProteinLength</b>	Glu34-Tyr406
<b>Form</b>	Lyophilized powder/frozen liquid
<b>Molecular Mass</b>	45.06 kDa
<b>Purity</b>	> 90 % as determined by SDS-PAGE
<b>Notes</b>	For research use only.
<b>Storage</b>	Use a manual defrost freezer and avoid repeated freeze thaw cycles. Store at 2 to 8 centigrade for one week. Store at -20 to -80 centigrade for twelve months from the date of receipt.
<b>Storage Buffer</b>	Supplied as solution form in PBS, pH 7.5 or lyophilized from PBS, pH 7.5.
<b>Reconstitution</b>	Reconstitute in sterile water for a stock solution.

 Tel: 1-631-559-9269 1-516-512-3133

 Email: [info@creative-biomart.com](mailto:info@creative-biomart.com)  Fax: 1-631-938-8127

 45-1 Ramsey Road, Shirley, NY 11967, USA

**Shipping**

They are shipped out with dry ice/blue ice unless customers require otherwise.

**GENE INFORMATION**
**Gene Name**

ROR2 receptor tyrosine kinase-like orphan receptor 2 [ Homo sapiens (human) ]

**Official Symbol**

ROR2

**Synonyms**

ROR2; receptor tyrosine kinase-like orphan receptor 2; BDB, BDB1, NTRKR2; tyrosine-protein kinase transmembrane receptor ROR2; neurotrophic tyrosine kinase receptor-related 2; BDB; BDB1; NTRKR2; MGC163394;

**Gene ID**

4920

**mRNA Refseq**

NM\_004560

**Protein Refseq**

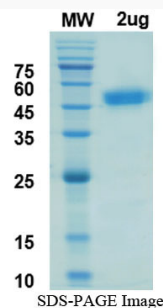
NP\_004551

**MIM**

602337

**UniProt ID**

Q01974

**SDS-PAGE**


Tel: 1-631-559-9269 1-516-512-3133

Email: [info@creative-biomart.com](mailto:info@creative-biomart.com) Fax: 1-631-938-8127

45-1 Ramsey Road, Shirley, NY 11967, USA