

Recombinant Human RORC protein, His-tagged

Cat. No. RORC-5893H Lot. No. (See product label)

SPECIFICATION

Product Overview	Recombinant Human RORC protein (165-518 aa) is produced by E. coli-derived, PET28a expression system. This protein is fused with a His tag.
Species	Human
Source	E.coli
ProteinLength	165-518 aa
Form	The purified protein was Lyophilized from sterile PBS (58mM Na ₂ HPO ₄ , 17mM NaH ₂ PO ₄ , 68mM NaCl, pH7.0). 5 % trehalose and 5 % mannitol are added as protectants before lyophilization.
Molecular Mass	44 kDa
AA Sequence	DLPEASACPPGLLKASGSGPSYSNNLAKAGLNGASCHLEYS PERGKAEGRESFYST GSQLTPDRCGLRFEHRHPGLGELGQGPDSYGSPSFRSTPEAPYASLTEIEHLVQS VCKSYRETCQLRLEDLLRQRSNIFSREEVTGYQRKSMWEMWERCAHHLTEAIQYVV EFAKRLSGFMELCQNDQIVLLKAGAMEVVLVRMCRAYNADNRTVFFEGKYGGMELF RALGCSELISSIFDFSHSLSALHFSEDEIALY TALVLINHRPGLQEKRKVEQLQYNLE LAFHHHLCKTHRQSILAKLPPKGLRSLCSQHVERLQIFQHLHPIVVQAAFPPLYKEL FSTETESPVGLSK
Purity	> 90%, by SDS-PAGE with Coomassie Brilliant Blue staining.

 Tel: 1-631-559-9269 1-516-512-3133

 Email: info@creative-biomart.com  Fax: 1-631-938-8127

 45-1 Ramsey Road, Shirley, NY 11967, USA

Stability	Store for up to 12 months at -20 centigrade to -80 centigrade as lyophilized powder.
Storage	<p>Short-term storage: Store at 2-8 centigrade for (1-2 weeks).</p> <p>Long-term storage: Aliquot and store at -20 centigrade to -80 centigrade for up to 3 months, buffer containing 50% glycerol is recommended for reconstitution. Avoid repeat freeze-thaw cycles.</p>
Reconstitution	<p>Reconstitute at 0.25 g/μl in 200 μl sterile water for short-term storage.</p> <p>Reconstitution with 200 μl 50% glycerol solution is recommended for longer term storage.</p> <p>If a different concentration is needed for your purposes please adjust the reconstitution volume as required (please note: the ion concentration of the final solution will vary according to the volume used).</p> <p>Note: Centrifuge vial before opening. When reconstituting, gently pipet and wash down the sides of the vial to ensure full recovery of the protein into solution.</p>
Shipping	The product is shipped at ambient temperature. Upon receipt, store it immediately at the recommended temperature.

GENE INFORMATION

Gene Name	RORC RAR-related orphan receptor C [Homo sapiens]
Official Symbol	RORC
Synonyms	RORC; NR1F3; RORG; RZRG; TOR; RZR-GAMMA; MGC129539;
Gene ID	6097
mRNA Refseq	NM_001001523

 Tel: 1-631-559-9269 1-516-512-3133

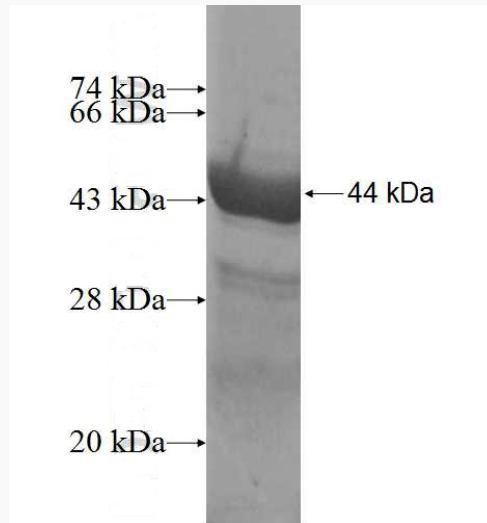
 Email: info@creative-biomart.com  Fax: 1-631-938-8127

 45-1 Ramsey Road, Shirley, NY 11967, USA

Protein Refseq NP_001001523

MIM 602943

UniProt ID P51449



Tel: 1-631-559-9269 1-516-512-3133

Email: info@creative-biomart.com Fax: 1-631-938-8127

45-1 Ramsey Road, Shirley, NY 11967, USA