

Active Recombinant Human ROS1 (L2086F) Protein, GST tagged

Cat. No. ROS1-03H Lot. No. (See product label)

SPECIFICATION

Product Overview	Recombinant human ROS1 (L2086F) (1881-end) was expressed by baculovirus in Sf9 insect cells using an N terminal GST tag. The gene accession number is NM_002944.
Species	Human
Source	Insect Cells
ProteinLength	ROS1: 1881-end
Description	This proto-oncogene, highly-expressed in a variety of tumor cell lines, belongs to the sevenless subfamily of tyrosine kinase insulin receptor genes. The protein encoded by this gene is a type I integral membrane protein with tyrosine kinase activity. The protein may function as a growth or differentiation factor receptor.
Form	Recombinant protein stored in 50mM Tris-HCl, pH 7.5, 150mM NaCl, 10mM glutathione, 0.1mM EDTA, 0.25mM DTT, and 25% glycerol.
Bio-activity	108 nmol/min/mg
Molecular Mass	~82 kDa
Purity	>90%

 Tel: 1-631-559-9269 1-516-512-3133

 Email: info@creative-biomart.com  Fax: 1-631-938-8127

 45-1 Ramsey Road, Shirley, NY 11967, USA

Storage	Store product at –70 centigrade. For optimal storage, aliquot target into smaller quantities after centrifugation and store at recommended temperature. For most favorable performance, avoid repeated handling and multiple freeze/thaw cycles. Stability: 1 yr at –70 centigrade from date of shipment.
Concentration	0.1 µg/µL
Shipping	Dry ice
Reference	1. Charest, A. et al: Fusion of FIG to the receptor tyrosine kinase ROS in a glioblastoma with an interstitial del(6)(q21q21). Genes Chromosomes Cancer 37: 58-71, 2003. 2. Biscup, C. et al: Visualization of SHP-1-target interaction. J Cell Sci. 2004 Oct 1;117(Pt 21):5165-78. 3. Gendarme, S. et al: ROS-1 Fusions in Non-Small-Cell Lung Cancer: Evidence to Date. Curr. Oncol. 29(2):641-658, 2022.

GENE INFORMATION

Gene Name	ROS1 ROS proto-oncogene 1, receptor tyrosine kinase [Homo sapiens (human)]
Official Symbol	ROS1
Synonyms	ROS1; c-ros oncogene 1 , receptor tyrosine kinase; v ros avian UR2 sarcoma virus oncogene homolog 1 , v ros UR2 sarcoma virus oncogene homolog 1 (avian); proto-oncogene tyrosine-protein kinase ROS; c ros 1; MCF3; ROS; proto-oncogene c-Ros; proto-oncogene c-Ros-1; c-Ros receptor tyrosine kinase; receptor tyrosine kinase c-ros oncogene 1; v-ros UR2 sarcoma virus oncogene homolog 1; transmembrane tyrosine-specific protein kinase; v-ros avian UR2 sarcoma virus oncogene homolog 1; c-ros-1
Gene ID	6098

 Tel: 1-631-559-9269 1-516-512-3133

 Email: info@creative-biomart.com  Fax: 1-631-938-8127

 45-1 Ramsey Road, Shirley, NY 11967, USA

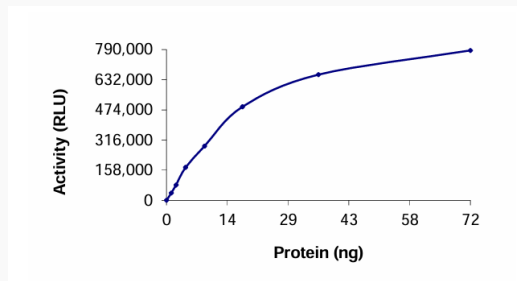
mRNA Refseq [NM_002944](#)

Protein Refseq [NP_002935](#)

MIM [165020](#)

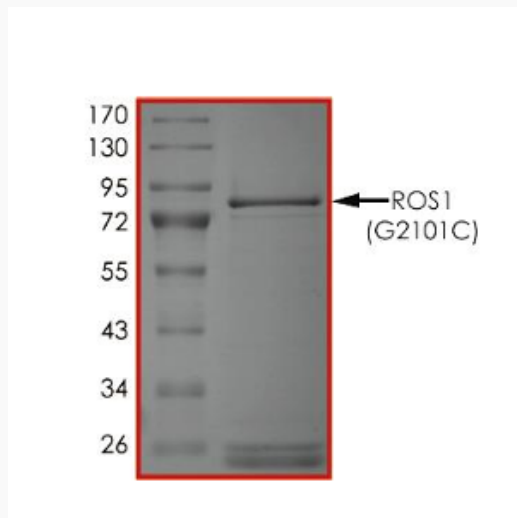
UniProt ID [P08922](#)

Specific Activity



The specific activity of ROS1 (G2101C) was determined to be 108 nmol/min/mg as per activity assay protocol.

Purity



Tel: 1-631-559-9269 1-516-512-3133

Email: info@creative-biomart.com Fax: 1-631-938-8127

45-1 Ramsey Road, Shirley, NY 11967, USA



The purity of ROS1 (G2101C) was determined to be >90% by densitometry. approx.
MW ~82kDa

 Tel: 1-631-559-9269 1-516-512-3133

 Email: info@creative-biomart.com  Fax: 1-631-938-8127

 45-1 Ramsey Road, Shirley, NY 11967, USA