

Recombinant Human ROS1 protein, His & T7-tagged

Cat. No. ROS1-1185H Lot. No. (See product label)

SPECIFICATION

Product Overview	Recombinant Human ROS1 aa. (Leu1945~Phe2222 (Accession # P08922) fused with N-terminal His & T7 tag was produced in E. coli cells.
Species	Human
Source	E.coli
ProteinLength	Leu1945~Phe2222
Description	This proto-oncogene, highly-expressed in a variety of tumor cell lines, belongs to the sevenless subfamily of tyrosine kinase insulin receptor genes. The protein encoded by this gene is a type I integral membrane protein with tyrosine kinase activity. The protein may function as a growth or differentiation factor receptor.
Form	Freeze-dried powder
Molecular Mass	Predicted Molecular Mass: 35.5kDa.
Endotoxin	<1.0EU per 1g (determined by the LAL method)
Purity	>90%
Characteristic	The isoelectric point is 6.2.
Applications	SDS-PAGE; WB; ELISA; IP.

 Tel: 1-631-559-9269 1-516-512-3133

 Email: info@creative-biomart.com  Fax: 1-631-938-8127

 45-1 Ramsey Road, Shirley, NY 11967, USA

Stability	The thermal stability is described by the loss rate of the target protein. The loss rate was determined by accelerated thermal degradation test, that is, incubate the protein at 37°C for 48h, and no obvious degradation and precipitation were observed. (Referring from China Biological Products Standard, which was calculated by the Arrhenius equation.) The loss of this protein is less than 5% within the expiration date under appropriate storage condition.
Storage	Avoid repeated freeze/thaw cycles. Store at 2-8°C for one month. Aliquot and store at -80°C for 12 months.
Storage buffer	Supplied as lyophilized form in PBS, pH7.4, containing 5% trehalose, 0.01% sarcosyl.
Reconstitution	Reconstitute in sterile PBS, pH7.2-pH7.4.

GENE INFORMATION

Gene Name	ROS1 ROS proto-oncogene 1, receptor tyrosine kinase [Homo sapiens (human)]
Official Symbol	ROS1
Synonyms	ROS1; ROS proto-oncogene 1, receptor tyrosine kinase; ROS; MCF3; c-ros-1; proto-oncogene tyrosine-protein kinase ROS; ROS proto-oncogene 1 , receptor tyrosine kinase; c-ros oncogene 1 , receptor tyrosine kinase; proto-oncogene c-Ros-1; transmembrane tyrosine-specific protein kinase; v-ros avian UR2 sarcoma virus oncogene homolog 1
Gene ID	6098
mRNA Refseq	NM_002944.2
Protein Refseq	NP_002935.2

 Tel: 1-631-559-9269 1-516-512-3133

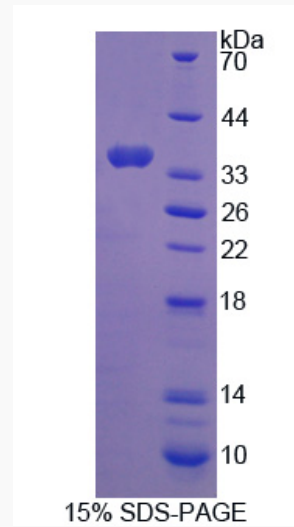
 Email: info@creative-biomart.com  Fax: 1-631-938-8127

 45-1 Ramsey Road, Shirley, NY 11967, USA

UniProt ID

P08922

SDS-PAGE



 Tel: 1-631-559-9269 1-516-512-3133

 Email: info@creative-biomart.com  Fax: 1-631-938-8127

 45-1 Ramsey Road, Shirley, NY 11967, USA