

Recombinant Active Human ROS1 (L2086F) Protein (1881-end), N-GST-tagged

Cat. No. ROS1-24H Lot. No. (See product label)

SPECIFICATION

Product Overview

Recombinant human ROS1 (L2086F) (1881-end) was expressed by baculovirus in Sf9 insect cells using an N-terminal GST tag.

Species

Human

Source

Sf9 Cells

ProteinLength

1881-end

Description

ROS1 is a proto-oncogene and member of the sevenless subfamily of tyrosine kinase insulin receptor genes. ROS1 is highly-expressed in a variety of tumor cell lines and functions as a growth or differentiation factor receptor. The FIG gene can fuse with the ROS1 gene in glioblastoma cell lines. The resulting ROS1/FIG fusion protein is a constitutively activated tyrosine kinase. Direct interaction of ROS1 and the phosphatase SHP-1 can lead to efficient downregulation of ROS1-mediated signaling. Binding sites in the ROS1 cytoplasmic domain display high affinity binding to the SHP-1 N-terminal SH2 domain. Structural models of ROS1 (L2086F) predict resistance to crizotinib, entrectinib, and lolartanib via steric hindrance.

Bio-activity

The specific activity of ROS1(L2086F) was determined to be 121 nmol/min/mg as per activity assay protocol.

Molecular Mass

Observed MW: ~82 kDa.
Calculated MW: ~79 kDa.

 Tel: 1-631-559-9269 1-516-512-3133

 Email: info@creative-biomart.com  Fax: 1-631-938-8127

 45-1 Ramsey Road, Shirley, NY 11967, USA

Purity	The purity of ROS1(L2086F) was determined to be > 90 % by densitometry.
Stability	One year at -70 centigrade from date of shipment.
Storage	Store product at -70 centigrade. For optimal storage, aliquot target into smaller quantities after centrifugation and store at recommended temperature. For most favorable performance, avoid repeated handling and multiple freeze/thaw cycles.
Concentration	0.1 µg/µL
Storage Buffer	Recombinant protein stored in 50mM Tris-HCl, pH 7.5, 150mM NaCl, 10mM glutathione, 0.1mM EDTA, 0.25mM DTT, and 25% glycerol.
Shipping	Dry ice

GENE INFORMATION

Gene Name	ROS1 c-ros oncogene 1, receptor tyrosine kinase [Homo sapiens (human)]
Official Symbol	ROS1
Synonyms	ROS1; c-ros oncogene 1, receptor tyrosine kinase; v ros avian UR2 sarcoma virus oncogene homolog 1, v ros UR2 sarcoma virus oncogene homolog 1 (avian); proto-oncogene tyrosine-protein kinase ROS; c ros 1; MCF3; ROS; proto-oncogene c-Ros; proto-oncogene c-Ros-1; c-Ros receptor tyrosine kinase; receptor tyrosine kinase c-ros oncogene 1; v-ros UR2 sarcoma virus oncogene homolog 1; transmembrane tyrosine-specific protein kinase; v-ros avian UR2 sarcoma virus oncogene homolog 1; c-ros-1;
Gene ID	6098

 Tel: 1-631-559-9269 1-516-512-3133

 Email: info@creative-biomart.com  Fax: 1-631-938-8127

 45-1 Ramsey Road, Shirley, NY 11967, USA

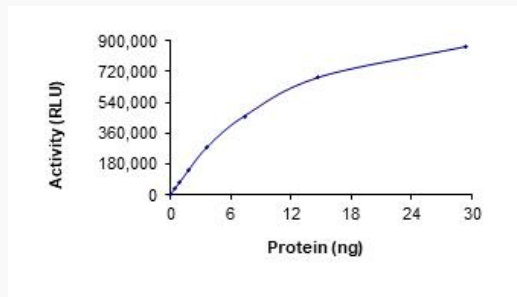
mRNA Refseq [NM_002944](#)

Protein Refseq [NP_002935](#)

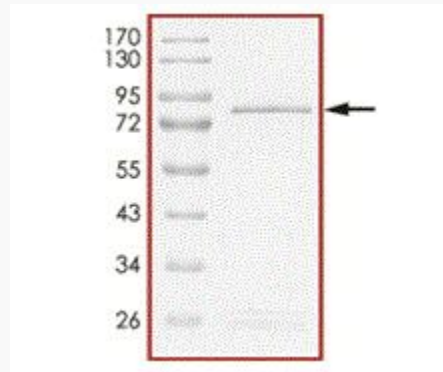
MIM [165020](#)


UniProt ID [P08922](#)

Activity




Purity



 Tel: 1-631-559-9269 1-516-512-3133

 Email: info@creative-biomart.com  Fax: 1-631-938-8127

 45-1 Ramsey Road, Shirley, NY 11967, USA