

Recombinant Human ROS1 Protein (Leu1945-Phe2222), N-His tagged

Cat. No. ROS1-6195H Lot. No. (See product label)

SPECIFICATION

Product Overview	Recombinant human ROS1 (Leu1945-Phe2222) fused with the N-His tag was expressed in E. coli.
Species	Human
Source	E.coli
ProteinLength	Leu1945-Phe2222
Form	Lyophilized powder/frozen liquid
Molecular Mass	34.06 kDa
Purity	> 90 % as determined by SDS-PAGE
Notes	For research use only.
Storage	Use a manual defrost freezer and avoid repeated freeze thaw cycles. Store at 2 to 8 centigrade for one week. Store at -20 to -80 centigrade for twelve months from the date of receipt.
Storage Buffer	0.01M PBS, pH 7.4, 0.02 % NLS
Reconstitution	Reconstitute in sterile water for a stock solution.

 Tel: 1-631-559-9269 1-516-512-3133

 Email: info@creative-biomart.com  Fax: 1-631-938-8127

 45-1 Ramsey Road, Shirley, NY 11967, USA

Shipping They are shipped out with dry ice/blue ice unless customers require otherwise.

GENE INFORMATION

Gene Name [ROS1 c-ros oncogene 1, receptor tyrosine kinase \[Homo sapiens \(human\) \]](#)

Official Symbol [ROS1](#)

Synonyms

ROS1; c-ros oncogene 1, receptor tyrosine kinase; v ros avian UR2 sarcoma virus oncogene homolog 1, v ros UR2 sarcoma virus oncogene homolog 1 (avian); proto-oncogene tyrosine-protein kinase ROS; c ros 1; MCF3; ROS; proto-oncogene c-Ros; proto-oncogene c-Ros-1; c-Ros receptor tyrosine kinase; receptor tyrosine kinase c-ros oncogene 1; v-ros UR2 sarcoma virus oncogene homolog 1; transmembrane tyrosine-specific protein kinase; v-ros avian UR2 sarcoma virus oncogene homolog 1; c-ros-1;

Gene ID [6098](#)

mRNA Refseq [NM_002944](#)

Protein Refseq [NP_002935](#)

MIM [165020](#)

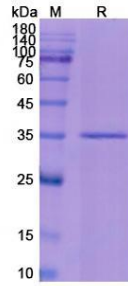
UniProt ID [P08922](#)

 Tel: 1-631-559-9269 1-516-512-3133

 Email: info@creative-biomart.com  Fax: 1-631-938-8127

 45-1 Ramsey Road, Shirley, NY 11967, USA

SDS-PAGE



 Tel: 1-631-559-9269 1-516-512-3133

 Email: info@creative-biomart.com  Fax: 1-631-938-8127

 45-1 Ramsey Road, Shirley, NY 11967, USA