

Recombinant Full Length Human RPA2 Protein, C-Flag-tagged

Cat. No. RPA2-1430HFL Lot. No. (See product label)

SPECIFICATION

Product Overview Recombinant Full Length Human RPA2 Protein, fused to Flag-tag at C-terminus, was expressed in Mammalian cells.

Species Human

Source Mammalian Cells

Description This gene encodes a subunit of the heterotrimeric Replication Protein A (RPA) complex, which binds to single-stranded DNA (ssDNA), forming a nucleoprotein complex that plays an important role in DNA metabolism, being involved in DNA replication, repair, recombination, telomere maintenance, and co-ordinating the cellular response to DNA damage through activation of the ataxia telangiectasia and Rad3-related protein (ATR) kinase. The RPA complex protects single-stranded DNA from nucleases, prevents formation of secondary structures that would interfere with repair, and co-ordinates the recruitment and departure of different genome maintenance factors. The heterotrimeric complex has two different modes of ssDNA binding, a low-affinity and high-affinity mode, determined by which oligonucleotide/oligosaccharide-binding (OB) domains of the complex are utilized, and differing in the length of DNA bound. This subunit contains a single OB domain that participates in high-affinity DNA binding and also contains a winged helix domain at its carboxy terminus, which interacts with many genome maintenance proteins. Post-translational modifications of the RPA complex also play a role in co-ordinating different damage response pathways.

Form 25 mM Tris HCl, pH 7.3, 100 mM glycine, 10% glycerol.

 Tel: 1-631-559-9269 1-516-512-3133

 Email: info@creative-biomart.com  Fax: 1-631-938-8127

 45-1 Ramsey Road, Shirley, NY 11967, USA

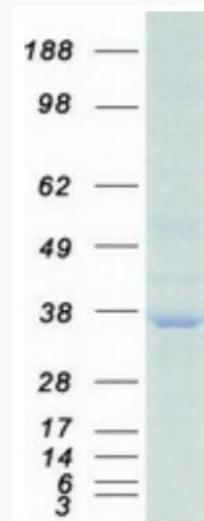
Molecular Mass	29.1 kDa
AA Sequence	MWNSGFESYGSSSYGGAGGYTQSPGGFGSPAPSQAEKKSRRARAHIVPCTISQLL SATLVDEVFRIGNVE ISQVTIVGIIRHAEKAPTNIYKIDDMTAAAPMDVRQWVDTDDT SSENTVVPPEYVKVAGHLRSFQNKKS LVAFKIMPLEDMNEFTTHILEVINAHMVLS KANSQPSAGRAPISNPGMSEAGNFGGNSFMPANGLTVAQN QVLNLIKACPRPEGLNFQDLKNQLKHMSVSSIKQAVDFLSNEGHIYSTVDDDDHFKST DAESGPTRTRPLEQKLISEEDLAANDILDYKDDDDKV
Purity	> 80% as determined by SDS-PAGE and Coomassie blue staining.
Stability	Stable for 12 months from the date of receipt of the product under proper storage and handling conditions. Avoid repeated freeze-thaw cycles.
Storage	Store at -80 centigrade.
Concentration	>50 ug/mL as determined by microplate BCA method.
Preparation	Recombinant protein was captured through anti-DDK affinity column followed by conventional chromatography steps.
Protein Families	Druggable Genome, Stem cell - Pluripotency
Protein Pathways	DNA replication, Homologous recombination, Mismatch repair, Nucleotide excision repair
Full Length	Full L.
GENE INFORMATION	
Gene Name	RPA2 replication protein A2 [Homo sapiens (human)]

 Tel: 1-631-559-9269 1-516-512-3133

 Email: info@creative-biomart.com  Fax: 1-631-938-8127

 45-1 Ramsey Road, Shirley, NY 11967, USA

Official Symbol	RPA2
Synonyms	REPA2; RPA32; RP-A p32; RP-A p34
Gene ID	6118
mRNA Refseq	NM_002946.5
Protein Refseq	NP_002937.1
MIM	179836
UniProt ID	P15927



Coomassie blue staining of purified RPA2 protein.

 Tel: 1-631-559-9269 1-516-512-3133

 Email: info@creative-biomart.com  Fax: 1-631-938-8127

 45-1 Ramsey Road, Shirley, NY 11967, USA