

# Recombinant Human RPA2 Protein, Myc/DDK-tagged, C13 and N15-labeled

Cat. No. RPA2-3103H Lot. No. (See product label)

## SPECIFICATION

### Product Overview

RPA2 MS Standard C13 and N15-labeled recombinant protein (NP\_002937) with a C-terminal MYC/DDK tag, was expressed in HEK293 cells.

### Species

Human

### Source

HEK293

### Description

This gene encodes a subunit of the heterotrimeric Replication Protein A (RPA) complex, which binds to single-stranded DNA (ssDNA), forming a nucleoprotein complex that plays an important role in DNA metabolism, being involved in DNA replication, repair, recombination, telomere maintenance, and co-ordinating the cellular response to DNA damage through activation of the ataxia telangiectasia and Rad3-related protein (ATR) kinase. The RPA complex protects single-stranded DNA from nucleases, prevents formation of secondary structures that would interfere with repair, and co-ordinates the recruitment and departure of different genome maintenance factors. The heterotrimeric complex has two different modes of ssDNA binding, a low-affinity and high-affinity mode, determined by which oligonucleotide/oligosaccharide-binding (OB) domains of the complex are utilized, and differing in the length of DNA bound. This subunit contains a single OB domain that participates in high-affinity DNA binding and also contains a winged helix domain at its carboxy terminus, which interacts with many genome maintenance proteins. Post-translational modifications of the RPA complex also play a role in co-ordinating different damage response pathways.

 Tel: 1-631-559-9269 1-516-512-3133

 Email: [info@creative-biomart.com](mailto:info@creative-biomart.com)  Fax: 1-631-938-8127

 45-1 Ramsey Road, Shirley, NY 11967, USA

<b>Molecular Mass</b>	29.2 kDa
<b>AA Sequence</b>	MWNSGFESYGSSSYGGAGGYTQSPGGFGSPAPSQAEKKSRRARAHIVPCTISQLL SATLVDEVFRIGNVEISQVTIVGIIIRHAEKAPTNIYKIDDMTAAAPMDVRQWVDTDDTS SENTVVPPEYVKVAGHLRSFQNKKSLVAFKIMPLEDMNEFTTHILEVINAHMVLKA NSQPSAGRAPISNPGMSEAGNFGGNSFMPANGLTVAQNQVLNLIKACPRPEGLNF QDLKNQLKHMSVSSIKQAVDFLSNEGHIYSTVDDDDHFKSTDAESGPTRTRPLEQKLI SEEDLAANDILDYKDDDDKV
<b>Purity</b>	> 80% as determined by SDS-PAGE and Coomassie blue staining
<b>Stability</b>	Stable for 3 months from receipt of products under proper storage and handling conditions.
<b>Storage</b>	Store at -80 centigrade. Avoid repeated freeze-thaw cycles.
<b>Concentration</b>	50 µg/mL as determined by BCA
<b>Storage Buffer</b>	100 mM glycine, 25 mM Tris-HCl, pH 7.3.

## GENE INFORMATION

<b>Gene Name</b>	RPA2 replication protein A2 [ Homo sapiens (human) ]
<b>Official Symbol</b>	RPA2
<b>Synonyms</b>	RPA2; replication protein A2, 32kDa; replication protein A2 (32kD); replication protein A 32 kDa subunit; RP-A p32; RP-A p34; RF-A protein 2; replication factor A protein 2; replication protein A 34 kDa subunit; REPA2; RPA32;
<b>Gene ID</b>	6118

 Tel: 1-631-559-9269 1-516-512-3133

 Email: [info@creative-biomart.com](mailto:info@creative-biomart.com)  Fax: 1-631-938-8127

 45-1 Ramsey Road, Shirley, NY 11967, USA

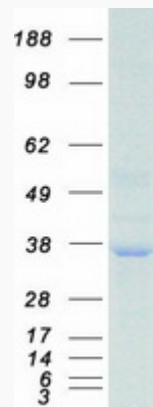
mRNA Refseq [NM\\_002946](#)

Protein Refseq [NP\\_002937](#)

MIM [179836](#)

UniProt ID [P15927](#)

SDS-PAGE



 Tel: 1-631-559-9269 1-516-512-3133

 Email: [info@creative-biomart.com](mailto:info@creative-biomart.com)  Fax: 1-631-938-8127

 45-1 Ramsey Road, Shirley, NY 11967, USA