

Recombinant Human RPAP3 Protein, GST-tagged

Cat. No. RPAP3-4270H Lot. No. (See product label)

SPECIFICATION

Product Overview	Human FLJ21908 full-length ORF (AAH56415, 1 a.a. - 631 a.a.) recombinant protein with GST-tag at N-terminal.
Species	Human
Source	Wheat Germ
Description	This gene encodes an RNA polymerase II-associated protein. The encoded protein may function in transcriptional regulation and may also regulate apoptosis. Alternatively spliced transcript variants have been described. [provided by RefSeq]
Molecular Mass	95.15 kDa
AA Sequence	MTSANKAIELQLQVKQNAEELQDFMRDLENWEKDIKQKDMELRRQNGVPEENLPPI RNGNFRKKKKGKAKESSKKTREENTKNRIKSYDYEAWAKLDVDRILDELKDDSTH ESLSQESESEEDGIHVDSQKALVLKEKGNKYFKQGKYDEAIDCYTKGMDADPYNPV LPTNRASAYFRLKKFAVAESDCNLAVALNRSYTKAYSRRGAARFALQKLEEAKKDYE RVLELEPNNFEATNELRKISQALASKENSYPKEADIVIKSTEGERKQIEAQQNKQQAI SEKDRGNNGFFKEGKYERAIECYTRGIAADGANALLPANRAMAYLKIQKYEEAEKDCT QAILLDGYSKAFARRGTARTFLGKLNEAKQDFETVLLLEPGNKQAVTELSKIKKKPL KKVIIIEETGNLIQTIDVDPDSTTAAAPENNPINLANVIAATGTTSSKNSSQDDLFPDSDTP RAKVLKIEEVSDTSSLQPQASLKQDVCQSYSEKMPIEIEQKPAQFATTVLPPIPANSF QLESDFRQLKSSPDMLYQYLKQIEPSLYPKLFQKNLDPDVFNQIVKILHDFYIEKEKPL LIFEILQRLSELKRFDMAVMFMSETEKKIARALFNHIDKSGLKDSSVEELKKRYGG

Tel: 1-631-559-9269 1-516-512-3133

Email: info@creative-biomart.com Fax: 1-631-938-8127

45-1 Ramsey Road, Shirley, NY 11967, USA

Applications	Enzyme-linked Immunoabsorbent Assay Western Blot (Recombinant protein) Antibody Production Protein Array
Notes	Best use within three months from the date of receipt of this protein.
Storage	Store at -80 centigrade. Aliquot to avoid repeated freezing and thawing.
Storage Buffer	50 mM Tris-HCl, 10 mM reduced Glutathione, pH=8.0 in the elution buffer.

GENE INFORMATION

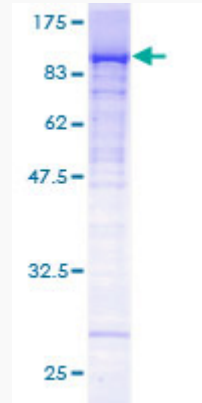
Gene Name	RPAP3 RNA polymerase II associated protein 3 [Homo sapiens]
Official Symbol	RPAP3
Synonyms	RPAP3; RNA polymerase II associated protein 3; RNA polymerase II-associated protein 3; FLJ21908; spag;
Gene ID	79657
mRNA Refseq	NM_001146075
Protein Refseq	NP_001139547
MIM	611477
UniProt ID	Q9H6T3

 Tel: 1-631-559-9269 1-516-512-3133

 Email: info@creative-biomart.com  Fax: 1-631-938-8127

 45-1 Ramsey Road, Shirley, NY 11967, USA

**Quality Control
Testing**



12.5% SDS-PAGE Stained with Coomassie Blue.

 Tel: 1-631-559-9269 1-516-512-3133

 Email: info@creative-biomart.com  Fax: 1-631-938-8127

 45-1 Ramsey Road, Shirley, NY 11967, USA