

Recombinant Human RPE Protein, Myc/DDK-tagged, C13 and N15-labeled

Cat. No. RPE-5843H **Lot. No.** (See product label)

SPECIFICATION

Product Overview	RPE MS Standard C13 and N15-labeled recombinant protein (NP_954699) with a C-terminal MYC/DDK tag, was expressed in HEK293 cells.
Species	Human
Source	HEK293
Description	RPE (Ribulose-5-Phosphate-3-Epimerase) is a Protein Coding gene. Diseases associated with RPE include Cardiomyopathy, Familial Restrictive, 2. Among its related pathways are Pentose phosphate pathway and Metabolism. Gene Ontology (GO) annotations related to this gene include protein homodimerization activity and racemase and epimerase activity, acting on carbohydrates and derivatives. An important paralog of this gene is RPEL1.
Molecular Mass	24.9 kDa
AA Sequence	MASGCKIGPSILNSDLANLGAECLRMLDSGADYLHLDVMDGHFVPNITFGHPVVESL RKQLGQDPFFDMHMMVSKPEQWVKPMAVAGANQYTFHLEATENPGALIKDIRENG MKVGLAIKPGTSVEYLAPWANQIDMALVMTVEPGFGGQKFMEDMMPKVHWLRTQF PSLDIEVDGGVGPDTVHKCAEAGANMIVSGSAIMRSEDPRSVINLLRNVCSEAAQKR SLDRTRTRPLEQKLISEEDLAANDILDYKDDDDKV
Purity	> 80% as determined by SDS-PAGE and Coomassie blue staining

 Tel: 1-631-559-9269 1-516-512-3133

 Email: info@creative-biomart.com  Fax: 1-631-938-8127

 45-1 Ramsey Road, Shirley, NY 11967, USA

Stability	Stable for 3 months from receipt of products under proper storage and handling conditions.
Storage	Store at -80 centigrade. Avoid repeated freeze-thaw cycles.
Concentration	50 µg/mL as determined by BCA
Storage Buffer	100 mM glycine, 25 mM Tris-HCl, pH 7.3.

GENE INFORMATION

Gene Name	RPE ribulose-5-phosphate-3-epimerase [Homo sapiens (human)]
Official Symbol	RPE
Synonyms	RPE; ribulose-5-phosphate-3-epimerase; ribulose-phosphate 3-epimerase; RPE2-1; MGC2636;
Gene ID	6120
mRNA Refseq	NM_199229
Protein Refseq	NP_954699
MIM	180480
UniProt ID	Q96AT9

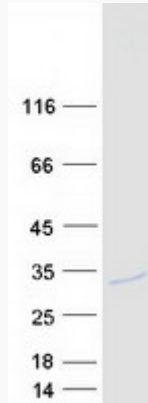
 Tel: 1-631-559-9269 1-516-512-3133

 Email: info@creative-biomart.com  Fax: 1-631-938-8127

 45-1 Ramsey Road, Shirley, NY 11967, USA



SDS-PAGE



☎ Tel: 1-631-559-9269 1-516-512-3133

☎ Email: info@creative-biomart.com ☎ Fax: 1-631-938-8127

☎ 45-1 Ramsey Road, Shirley, NY 11967, USA