

Recombinant Human RPE65 protein, His&Myc-tagged

Cat. No. RPE65-5322H Lot. No. (See product label)

SPECIFICATION

Product Overview	Recombinant Human RPE65 protein(Q16518)(2-533aa), fused with N-terminal His tag and C-terminal Myc tag, was expressed in Insect cells.
Species	Human
Source	Insect cells
ProteinLength	2-533aa
Form	If the delivery form is liquid, the default storage buffer is Tris/PBS-based buffer, 5%-50% glycerol. If the delivery form is lyophilized powder, the buffer before lyophilization is Tris/PBS-based buffer, 6% Trehalose, pH 8.0.
Molecular Mass	64.7 kDa
Purity	Greater than 85% as determined by SDS-PAGE.
Storage	Store at -20°C/-80°C upon receipt, aliquoting is necessary for mutiple use. Avoid repeated freeze-thaw cycles.
Reconstitution	We recommend that this vial be briefly centrifuged prior to opening to bring the contents to the bottom. Please reconstitute protein in deionized sterile water to a concentration of 0.1-1.0 mg/mL. We recommend to add 5-50% of glycerol (final concentration) and aliquot for long-term storage at -20°C/-80°C.

 Tel: 1-631-559-9269 1-516-512-3133

 Email: info@creative-biomart.com  Fax: 1-631-938-8127

 45-1 Ramsey Road, Shirley, NY 11967, USA

AA Sequence

SIQVEHPAGGYKKLFFETVEELSSPLTAHVTGRIPLWLTGSLLRCGPGLEFVGSEPFY
 HLFDGQALLHKFDFKEGHVYHRRFIRTDAYVRAMTEKRIVITEFGTCAFPDPCKNIF
 SRFFSYFRGVEVTDNALVNVYPVGEDYYACTETNFITKINPETLETIKQVDLCNYVSV
 NGATAHPHIENDGTVYNIGNCFGKNFSIAYNIVKIPPLQADKEDPISKSEIVVQFPCSD
 RFKPSYVHSFGLTPNYIVFVETPVKINLFKFLSSWSLWGANYMDCFESNETMGVWL
 HIADKKRKKYLNNKYRTSPFNLFHHINTYEDNGFLIVDLCCWKGFEFVYNYLYLANLR
 ENWEEVKKNARKAPQPEVRRYVLPLNIDKADTGKNLVTLPNTTATAILCSDETIWLEP
 EVLFSGPRQAFEFQINYQKYCGKPYTYAYGLGLNHFPDRLCKLNVKTKETWVWQ
 EPDSYPSEPIFVSHPDAL EEDDGVVLSVVVSPGAGQKPAYLLILNAKDLSEVARAEV
 EINIPVTFHGLFKKS

GENE INFORMATION

Gene Name [RPE65 retinal pigment epithelium-specific protein 65kDa \[Homo sapiens \]](#)

Official Symbol [RPE65](#)

Synonyms RPE65; retinal pigment epithelium-specific protein 65kDa; retinal pigment epithelium specific protein (65kD) , RP20; retinoid isomerohydrolase; all trans retinyl palmitate hydrolase; LCA2; rd12; retinol isomerase; p63; RBP-binding membrane protein; all-trans-retinyl-palmitate hydrolase; retinitis pigmentosa 20 (autosomal recessive); retinal pigment epithelium-specific 65 kDa protein; RP20; mRPE65; sRPE65;

Gene ID [6121](#)

mRNA Refseq [NM_000329](#)

Protein Refseq [NP_000320](#)

MIM [180069](#)

 Tel: 1-631-559-9269 1-516-512-3133

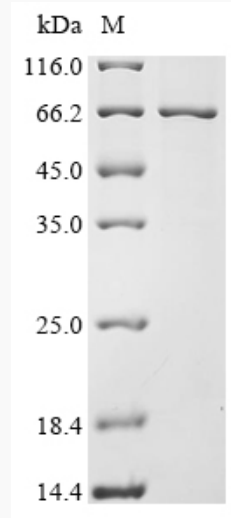
 Email: info@creative-biomart.com  Fax: 1-631-938-8127

 45-1 Ramsey Road, Shirley, NY 11967, USA

UniProt ID

Q16518

SDS-PAGE



 Tel: 1-631-559-9269 1-516-512-3133

 Email: info@creative-biomart.com  Fax: 1-631-938-8127

 45-1 Ramsey Road, Shirley, NY 11967, USA